

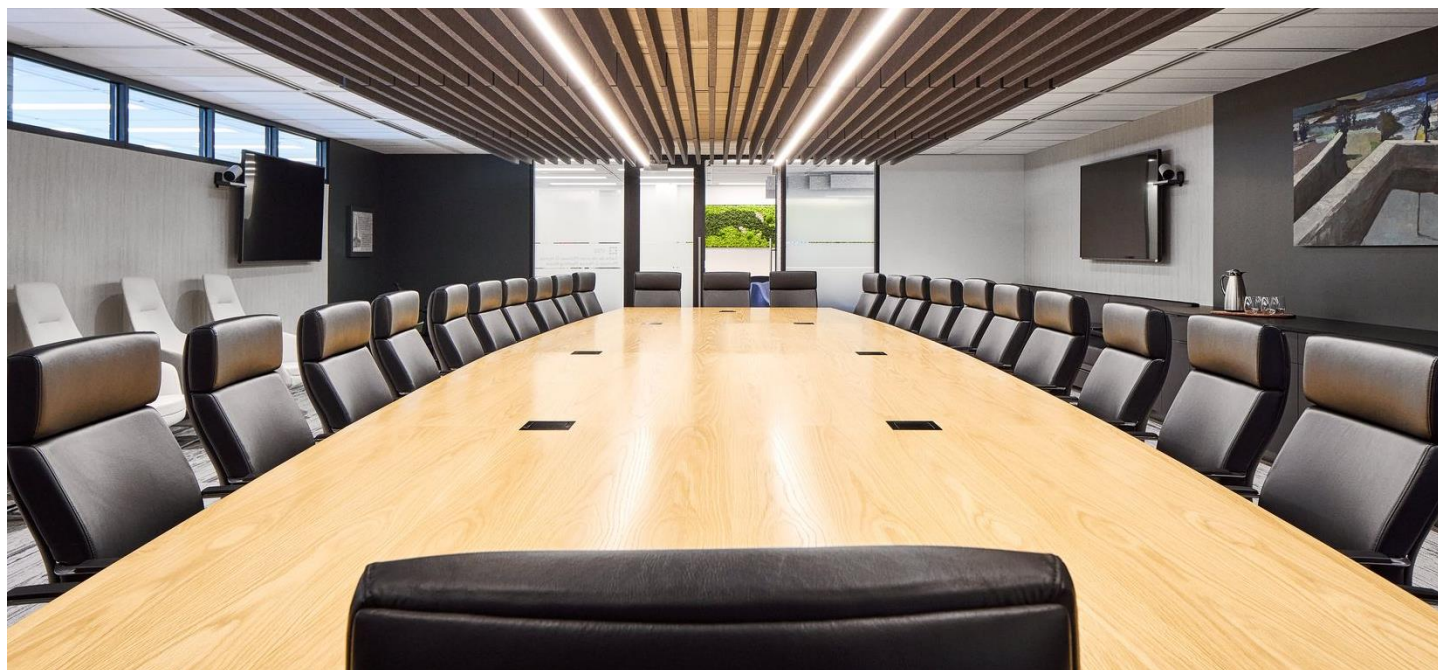
Case study Departmental suite at PSPC

APRIL 2022

Project:

11 Laurier street, Place du Portage, Gatineau





Project Story

When Interior Design Managers from Public Services and Procurement Canada (PSPC) walked around the 17th floor of Tower A of Portage III, the first thing they noticed was the breathtaking view of the Ottawa River. This panorama led them to think about all the history that this river carries, from the ancestral territory of the Algonquin people, to the raftsmen who made it transport thousands of logs. The movement of the river, its linear aspect as well as the wood it carried became the starting point for the design concept of the floor. From there, the consultants deepened the concept by drawing inspiration from the plants and vegetation bordering the river as well as the animals found there. This choice quickly turned into an opportunity to involve the future occupants of the space. It is therefore the story of the Ottawa River that inspired what is found on the floor, from the color of the walls to the components and colors of the furniture. A good example is the bench at the entrance and the acoustic panels that overhang it, reminiscent of the logs transported on the turbulent river.

ART INTEGRATION

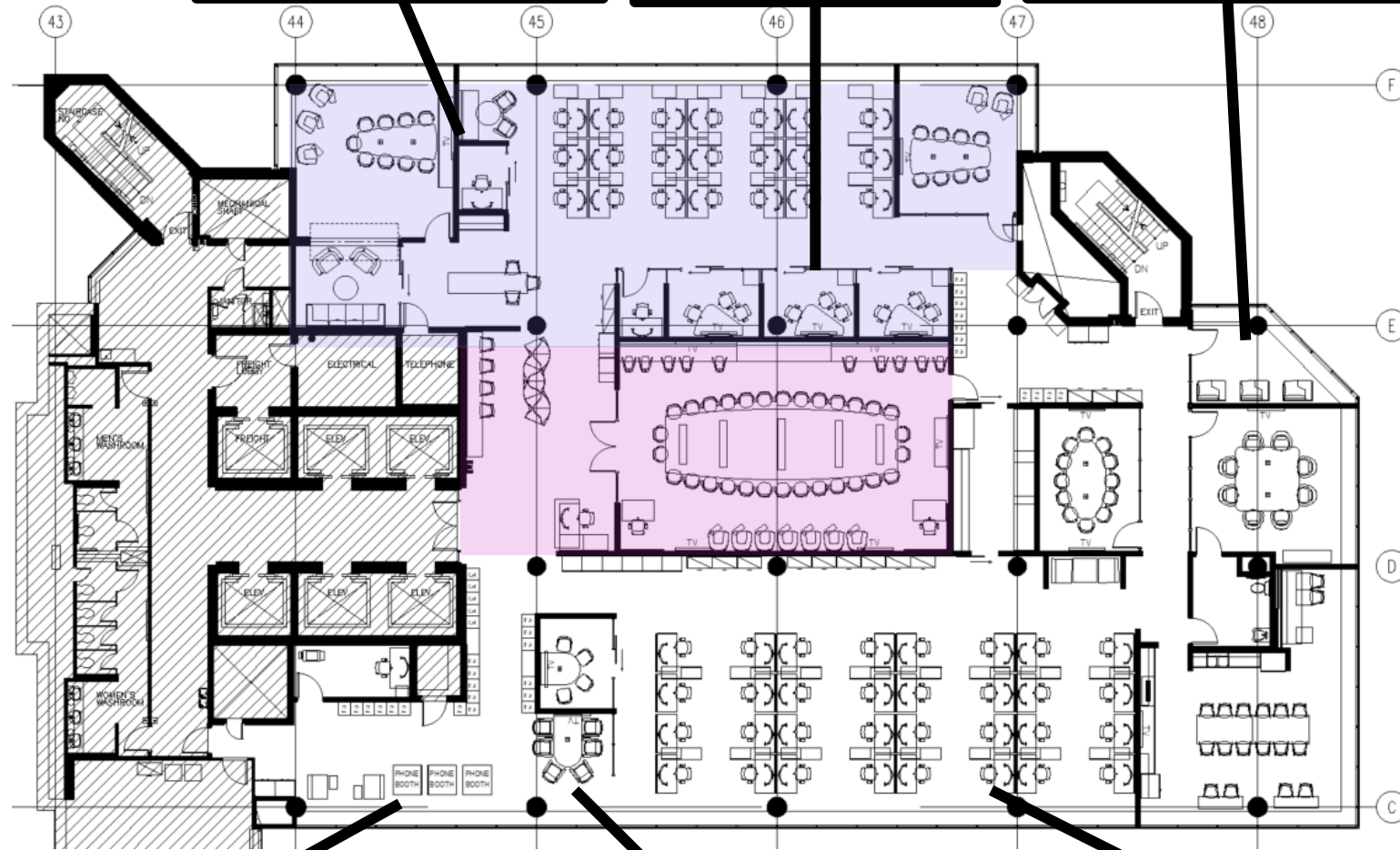
Several works of art have been installed throughout the space. Following a presentation of the project, a pre-selection of arts from the collection of the Art Bank of the Canada Council for the Arts was made. The works of art had to meet certain aesthetic criteria. For example, the subject had to be appropriate for a workplace, the colors had to match that of the project and the dimensions had to match the wall where it was going to be installed. At the end of the selection process, 50% of the arts exhibited in the space come from artists from different Indigenous communities in Canada. Please note that the works of art are rented.

Design Concept

Zoning and circulation

The layout of the Deputy Minister's space was designed following a national consultation. The final solution includes an executive zone (in purple) dedicated to the Deputy Minister and his team. As the Deputy Minister wanted to take full advantage of the variety offered by GCworkplace, his dedicated office space was transformed into a meeting room. If necessary, the room can be converted into an office with an adjacent private bathroom. In addition, a special purpose space (in pink) was necessary to accommodate a large number of visitors. A reception desk, a waiting area, a coffee station and a large meeting room, including desks for the transcribers, are therefore located near the main entrance.

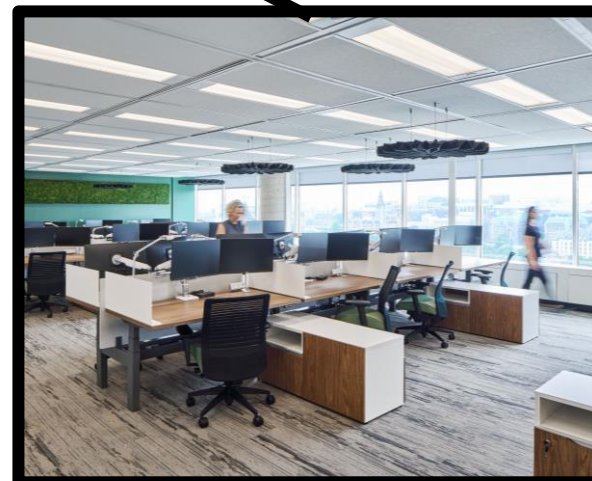
The space accommodates two distinct working groups. Thus, only the upper section of the plan is dedicated to the Deputy Minister. The open area for the Deputy Minister's team has been strategically set back to maximize privacy. The meeting rooms have been planned in such a way to create a separation between the two working groups. Some workpoints are shared such as the equipment room, reflection points, a medium meeting room and the kitchenette.



Circulation: The river is a central element of nature since it is the source of life. By its itinerant nature, the river represents the zone of movement.

Central space: The center of the river is a cooperative and lively environment, which represents the collaboration zone.

Workspace: The forest, which surrounds the river, is a calm environment sheltered from the weather. It represents the working area.





Project Context

Project Objectives

Durability: The existing furniture was sold on GCsurplus, the concrete floor in the kitchenette was not covered and the lighting system is adjustable by zone.

Accessibility: Particular attention to accessibility was also given when designing the space, especially the kitchenette and the bathroom in terms of knee and toes spaces, ease of access, ample clearance and large circulation path.

Multi-Function: The informal gathering space adjacent to the formal meeting room can transform the space for large or longer-term events (see images left and below).

Biophilia: Integration of natural materials, wallcovering illustrating elements of nature, framed moss, access to natural light and views of the outdoors in open areas.

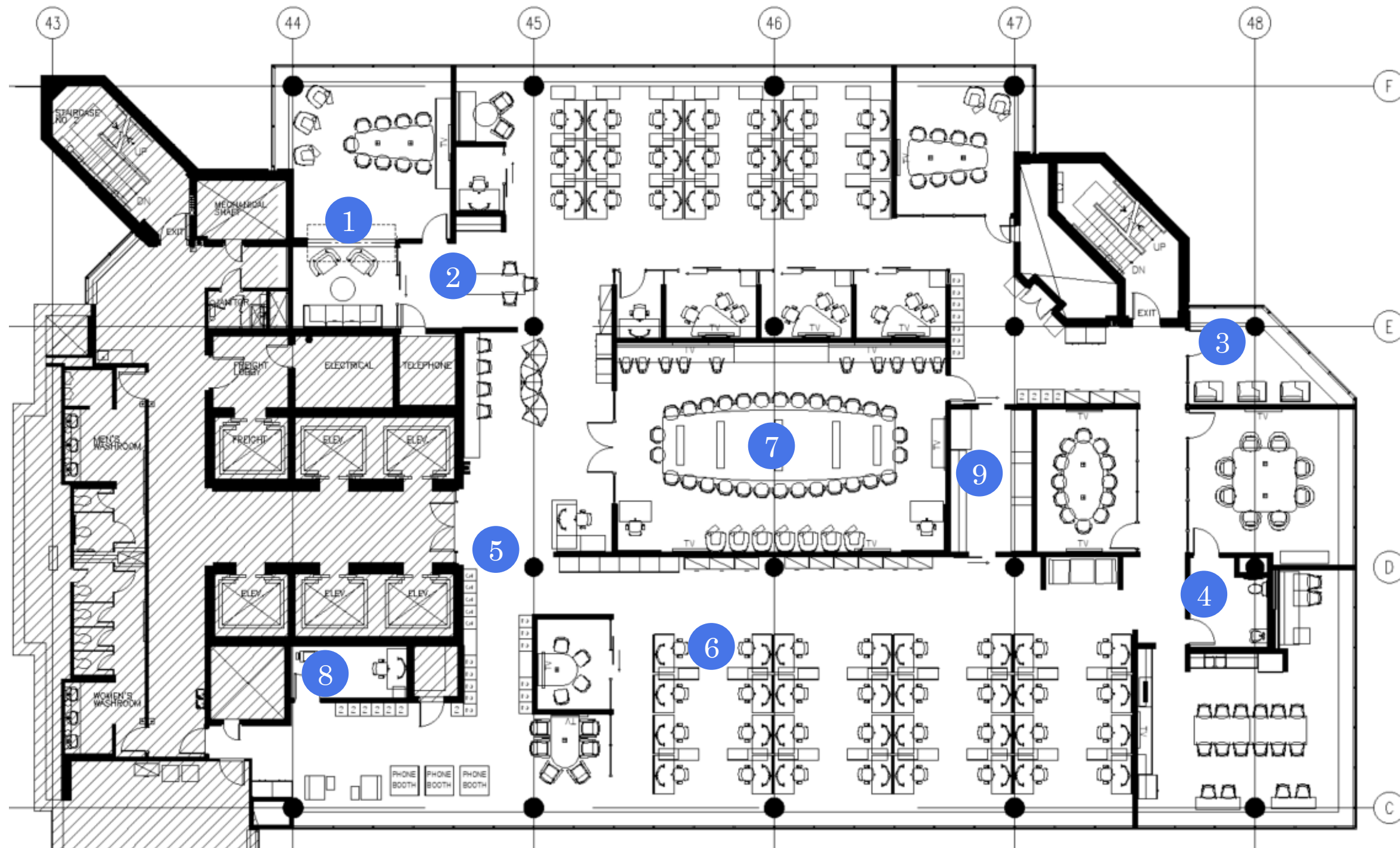
Space Planning Workbook

Profile: Balanced
 Space solution: 892 m2
 Target occupancy: 74 FTE
 Year of completion: 2021

Typical workstation: 54
 Touchdown: 4
 Focus pod: 0
 Focus room: 5
 Study: 0
 Reflection point: 3
 Phonebooth: 3

Chat point: 3
 Huddle: 1
 Teaming area: 1
 Work room: 3
 Project room: 0
 Medium meeting room: 3
 Large meeting room: 1





1. Retractable wall between the medium meeting room and the chat point allowing the rooms to be used separately
2. Coffee station near the meeting rooms to facilitate hosting visitors
3. Reflection points in an enclosed room with large windows to offer a calm space for employee wellbeing
4. Inclusive, accessible and gender-neutral bathroom accessible to all
5. Generously sized main hallway
6. Simple layout of workstations that lines the perimeter of the suite for easy orientation and circulation
7. Three types of seating in the meeting room (Conference chairs, height-adjustable lounge chairs with laptop tables and banquette with height-adjustable laptop tables) to support the variety of individual preferences
8. Height-adjustable work surfaces and ergonomic task chairs in all workstations and focus rooms
9. Task lighting at all workstations and dimmable lighting at enclosed workpoints to allow individual user adjustability
10. Closed equipment room with sliding doors to minimize noise and odor disturbance