









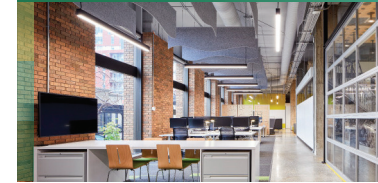
TOURS

All RPS employees are **GCworkplace ambassadors** - anyone working directly with client departments can organize and host a GCworkplace tour.

The target audience for in-person guided tours are client departments' senior leadership, preferably with 'future-of-work' and 'future-of-workplace' decision makers / influencers in attendance. Please note that employee-level tours cannot be supported at this time.

- 
AUDIENCE When client executives at the ADM level and higher will be in attendance, ask your respective DGO to advise RPS ADMO of the planned tour
- 
LOCATION Select the appropriate tour location(s) →
- 
SCHEDULE Coordinate with your client to determine a date & 60 minute timeslot
- 
SUPPORT Request a supporting resource for subject matter expertise
Click 'REQUEST' →
- 
INVITATION Send this **calendar invitation** to the list of attendees, and anyone else involved
- 
INFORMING Provide tour details to the location's client contact and Security Desk - Click 'INFORM' →

LOCATIONS



General GCworkplace

25 Eddy, Suite 226

[DOWNLOAD TOUR PACKAGE](#)



REQUEST Designer support
INFORM Site Rep & Security



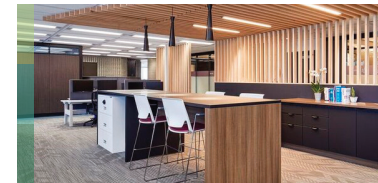
Workplace Transformation Program

Place du Portage II, 4th Floor

[DOWNLOAD TOUR PACKAGE](#)



REQUEST Designer support
INFORM Site Rep & Security



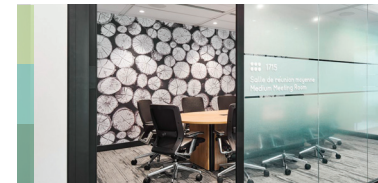
GCworkplace - ADMO

Place du Portage III, 9A1

[DOWNLOAD TOUR PACKAGE](#)



REQUEST Designer support
INFORM Site Rep & Security



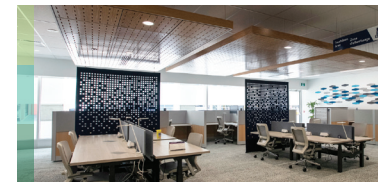
GCworkplace - DMO

Place du Portage, 17A

[DOWNLOAD TOUR PACKAGE](#)



REQUEST Designer support
INFORM Site Rep & Security



GCcoworking

L'Esplanade Laurier, Ground Floor



REQUEST coPro support

RESOURCES



Virtual tours



Photos



GCworkplace



GCcoworking

Workplace
Transformation
Program



ABW Etiquette



Contact



FAQ