

Official Languages Centre of Excellence

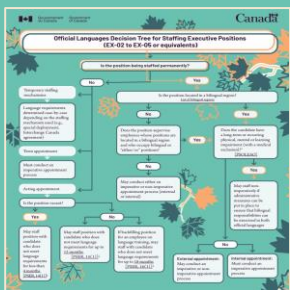
CLICK BELOW TO JOIN US FOR A CHAT ON MS TEAMS!

February 7 / 11:00 a.m. – 12:00 p.m. (ET)

February 11 / 2:00 p.m. – 3:00 p.m. (ET)

Tools, resources and references

Decision tree for staffing executive positions



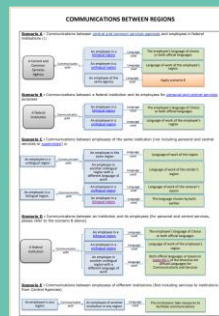
Language of work rights while teleworking

Official Languages and Supervision Scenarios in Unilingual vs. Bilingual Regions

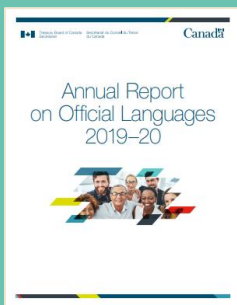
Please see the scenarios below for an overview of supervision in unilingual vs. bilingual regions. For more, please see 6.1 in the [Official Languages 2019-2020 Progress Report](#).

Location of Employee's Position	Language Requirement of Employee's Position	Language of Supervision
1. Bilingual region	Bilingual	English or French (employee's choice)
2. Bilingual region	Unilingual	English or French (employee's choice)
3. Bilingual region	Unilingual	Language of employee's position or, if employee chooses a bilingual position located in a bilingual region, employee's choice
4. Unilingual region	Bilingual	Language that predominates in the province or territory of the employee's position
5. Unilingual region	Unilingual	Language that predominates in the province or territory of the employee's position

Communications between regions



Annual report 2019-2020



Linguistic profile tool for bilingual positions



The Regulations and OLRRE 101



OLCE FAQs



Did you know?



The maple leaf design that varies between green and orange represents the duality between English and French. The interplay between the colors represents the diversity of people who speak one and/or the other of these two languages. Although each is distinct, it is together that this diversity contributes to the vitality of our country.

Subscribe to our newsletter
E-mail us
Visit our GCwiki

