



Whale Insight Application: Protecting North Atlantic Right Whales (NARW)

Supported by the CDOS Spatial Solutions

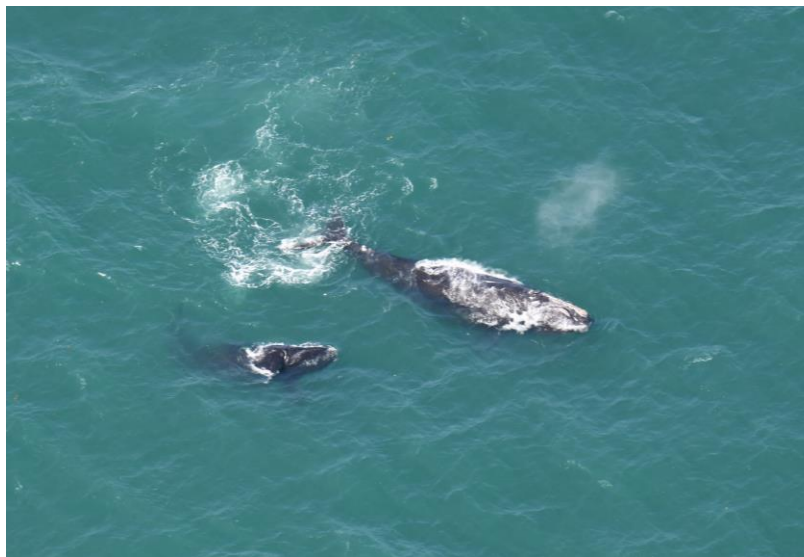
**Overview for the GC Data Conference
February 18-19, 2026**





WHERE ARE THE WHALES?

Whale Insight collects and displays survey platform track lines and validated detections of right whales reported in near-real time by various contributors across eastern Canada



New England
Aquarium



MINGAN ISLAND
CETACEAN STUDY



EST. 1785
UNB
UNIVERSITY OF NEW BRUNSWICK



NICK HAWKINS PHOTOGRAPHY



CEOTR



Anderson Cabot
Center for Ocean Life
at the New England Aquarium



DALHOUSIE
UNIVERSITY

BACKGROUND

- Whale Insight was born out of an urgent conservation need: there are currently only 372 North Atlantic right whales left in the world.
- In 2017, we saw a tragic spike in deaths. Climate change had shifted ocean conditions, and with that, the whales' feeding grounds moved from the Bay of Fundy to the Gulf of St. Lawrence with its busy shipping lanes and fishing zones.
- Fisheries and Oceans and Transport Canada stepped up quickly. We introduced fishing closures and vessel speed restrictions in areas where whales were seen. But that raised a big question: Where are the whales?
- Whale Insight is a robust, scalable platform to visualize survey track lines and whale detections in near real-time, helping us support dynamic management measures to protect the right whale.

WHALE INSIGHT

- Whale Insight is a DFO-led, publicly accessible, and bilingual visualization tool launched in May 2022 and upgraded to Version 2.0.1 in June of 2025
- Detection and track line data are available to decision makers and the public in near-real time through two interactive interfaces
- Endorsed as a Decade Action under the UN Decade of Ocean Science for Sustainable Development



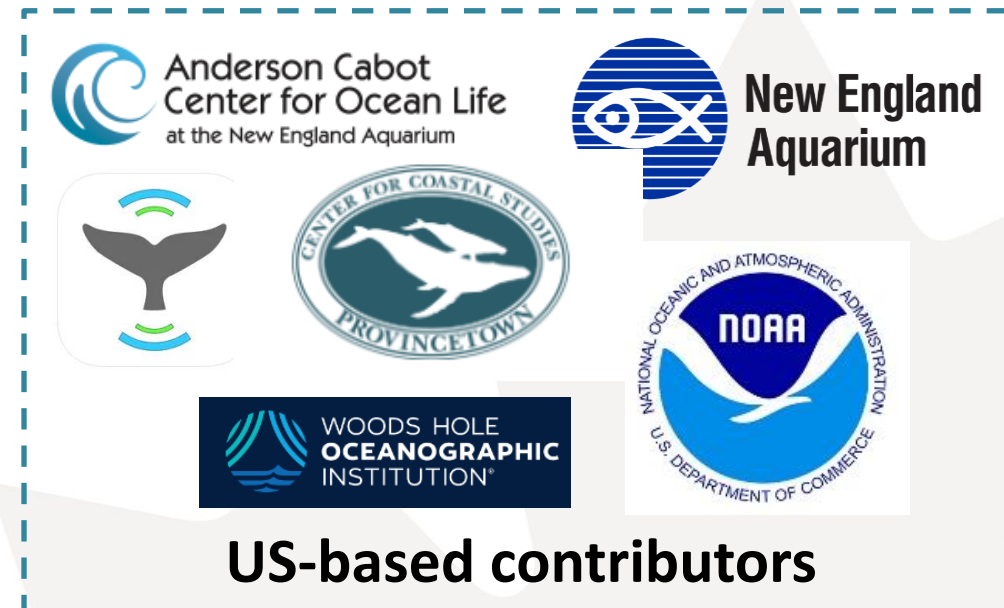
DATA CONTRIBUTORS & SHARING

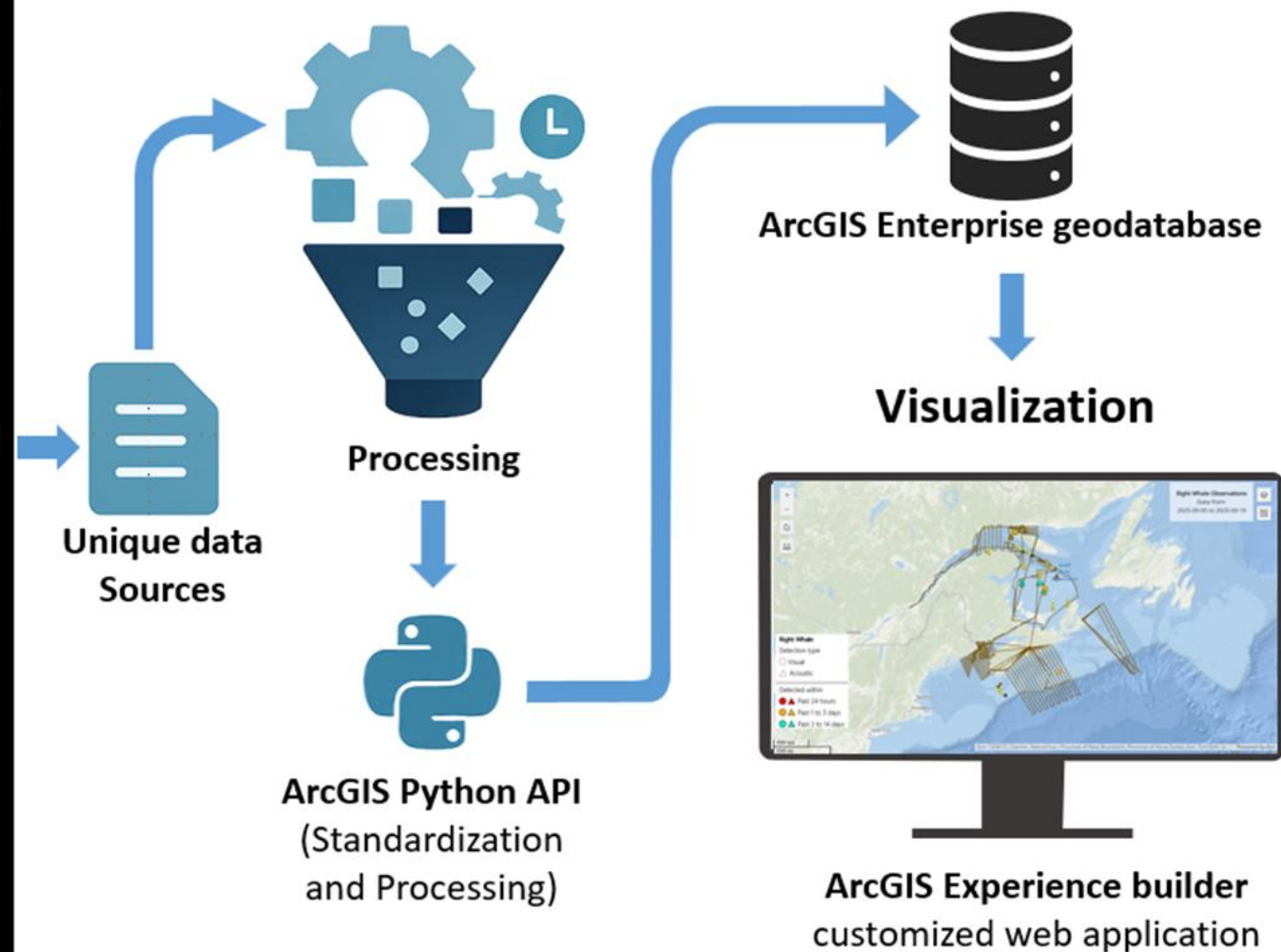
- Near-real time detections come from a variety of sources:
 - Government of Canada surveillance and enforcement teams
 - External partners and trusted sources
 - Opportunistic reports from non-expert sources and the public
- Data Sharing Agreements are developed with trusted sources to establish a direct data sharing pipeline with Whale Insight
- All detections on Whale Insight are contributed or validated by qualified marine mammal experts





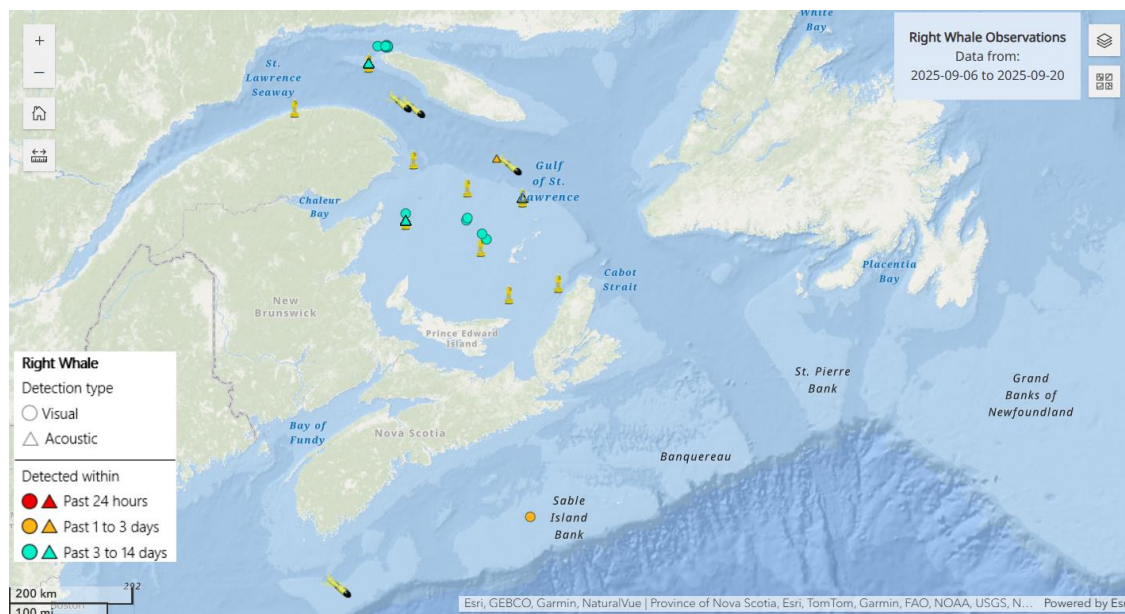
DATA CONTRIBUTORS & SHARING





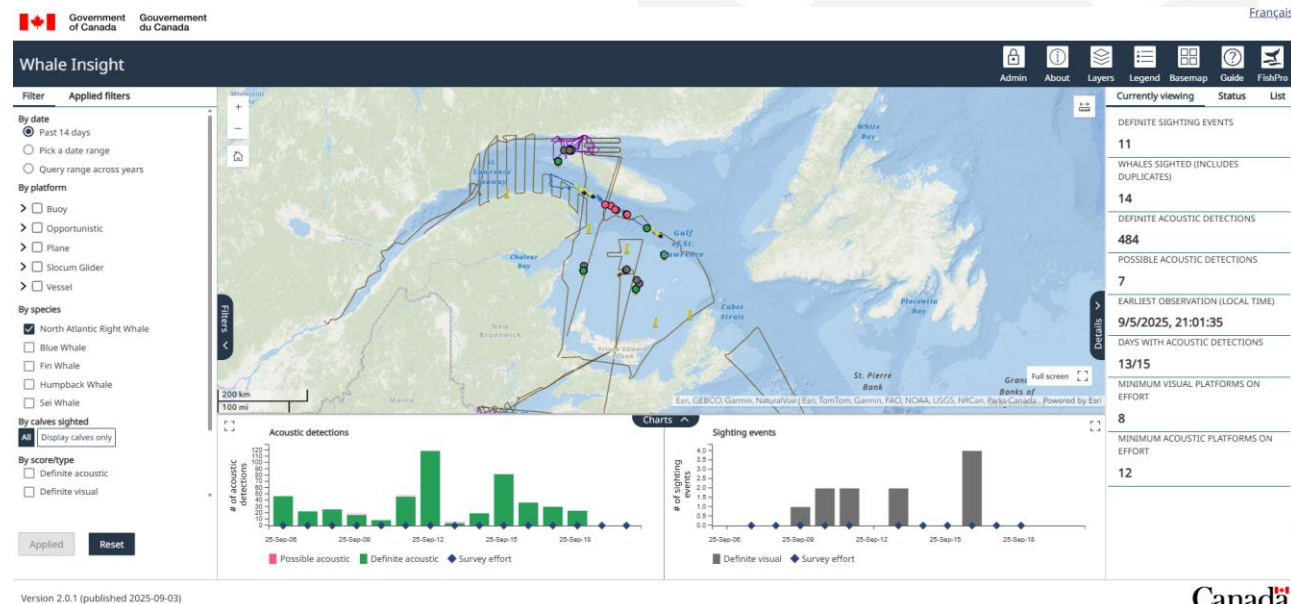
WHALE INSIGHT DASHBOARDS & DEMONSTRATIONS

Survey track line and validated detection data are available to researchers, decision makers and the public in near-real time through two interactive interfaces.



SUMMARY MAP

14 days of detections & basic filtering



ADVANCED MAP

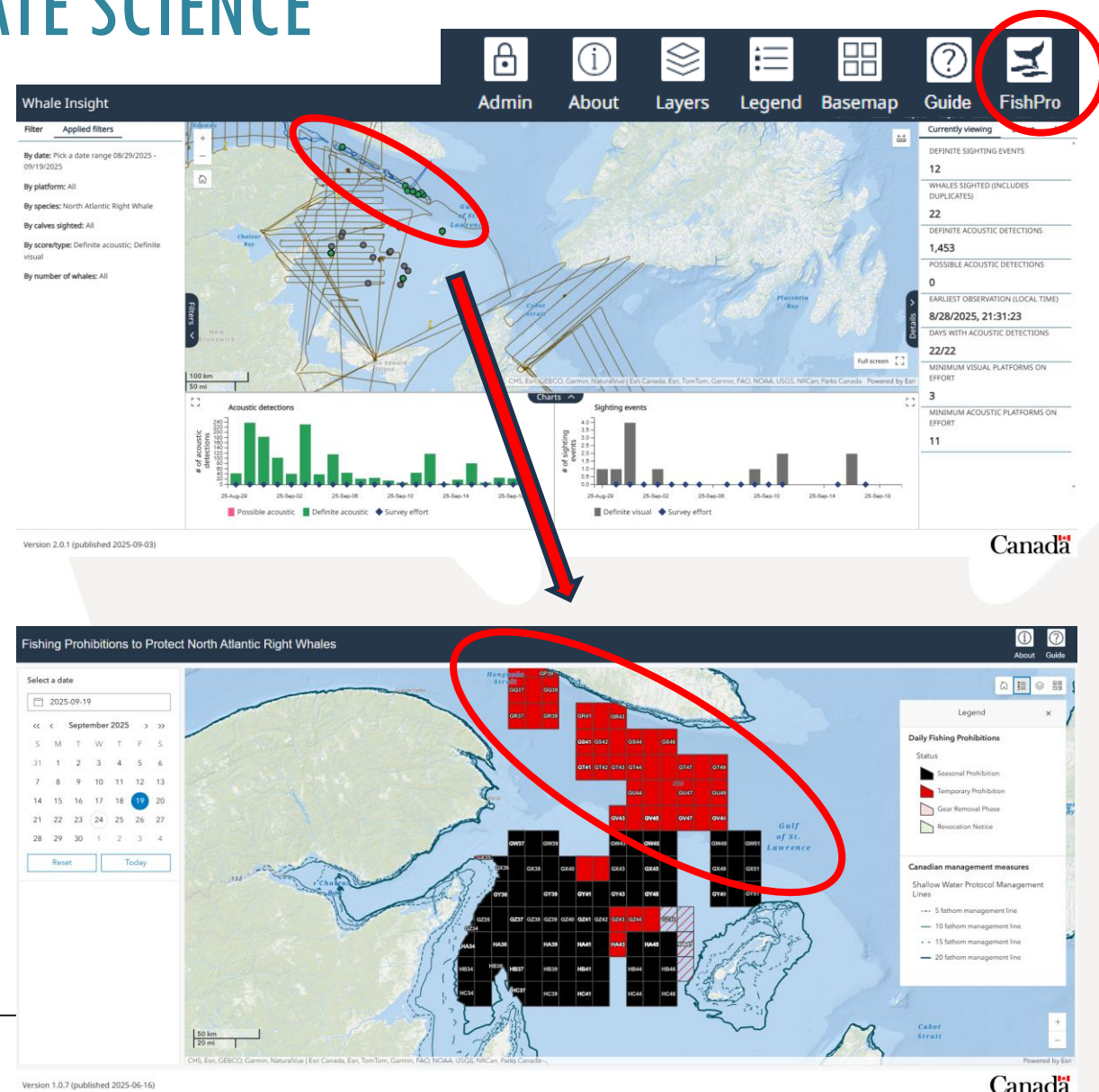
Advanced data exploration

EGIS DASHBOARDS HELP TO COMMUNICATE SCIENCE

- Whale Insight transforms scientific data into actionable insights that inform the management and protection of the NARW in Canada
- The platform has succeeded in building meaningful partnerships, encouraging trust and transparency, and enhancing collaboration within the broader science community

TO ACCESS | POUR ACCÈS

canada.ca/whale-insight-map





Thank you for your interest.

For more information or to explore collaboration opportunities, please contact

DFO.EDHSupport-SoutienCDE.MPO@dfo-mpo.gc.ca



APPENDIX

ENTERPRISE GEOGRAPHIC INFORMATION SYSTEM (eGIS) PLATFORM

