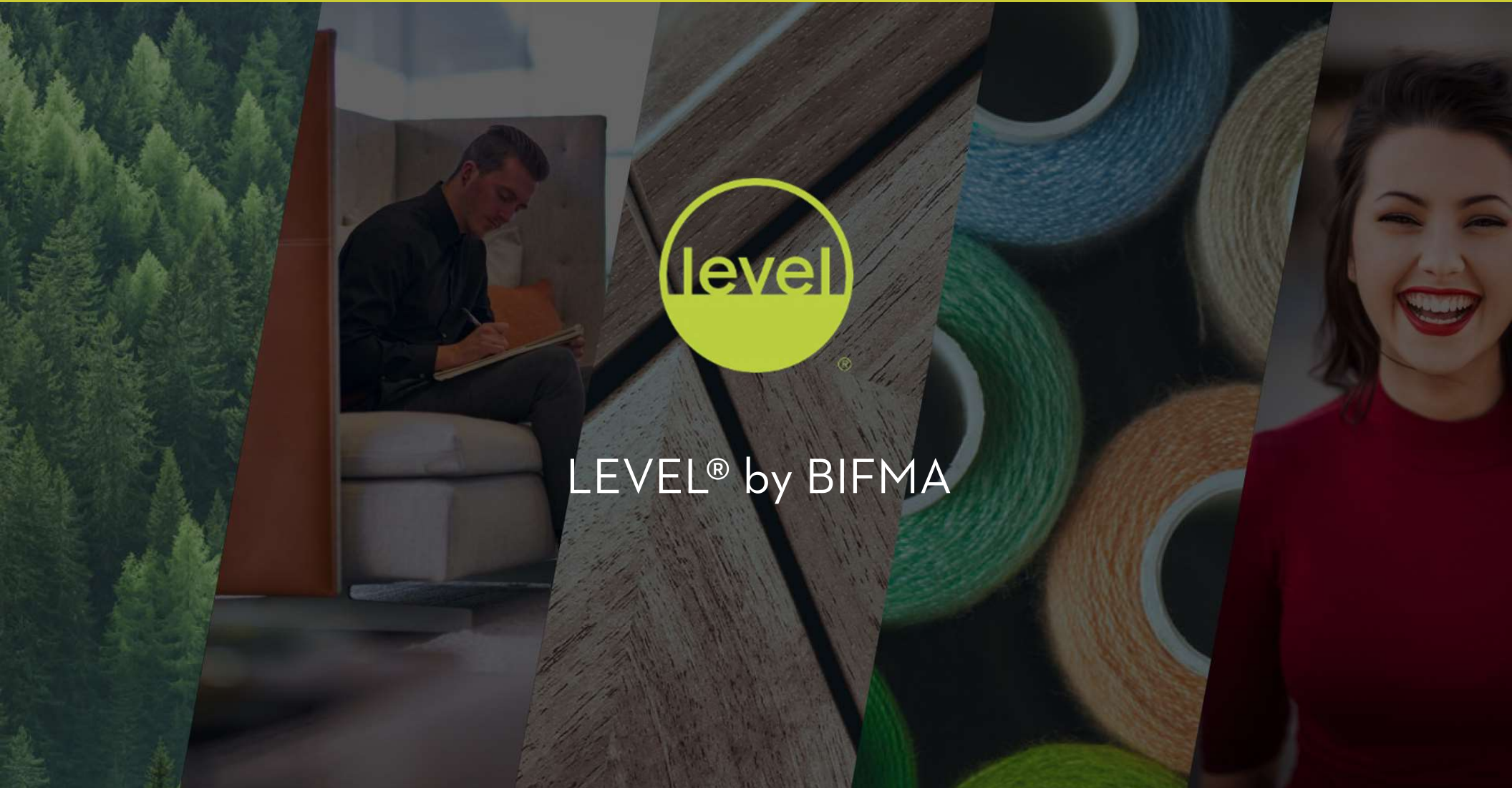




LEVEL® by BIFMA



Agenda

1

Overview

2

LEVEL[®] by BIFMA

3

Market Impact

4

LEVEL[®] Registry



01 Overview

Who is BIFMA & What is LEVEL?

BIFMA

*Representing the furniture industry
since 1973*

What We Do

1. Develop & maintain product standards
2. Provide resources & outreach to design, customer, and education communities
3. Support members with educational programming & resources
4. Advocate legislative & regulatory industry advancement

Engineering & Sustainability Standards

● Industry Reports & Forecast

LEVEL® Sustainability Certification

● Leadership Events

BIFMA Compliant® & LEVEL® Product Registries

● Continuing Education

● Speakers Bureau

LEVEL® by BIFMA

- e3 Furniture Sustainability Standard
- 3rd Party Certification
- LEVEL® Registry of Certified Products



Aligned with



LIVING
BUILDING
CHALLENGE

Why Did We Do It?

- Be proactive & set the bar high
- Tailored to the industry
- Invited regulators to the table to solve problems
- Set an industry measuring stick to stop greenwashing.
- Meet market demand.

Continuous Improvement

- LEVEL® is in 4th iteration—*already!*

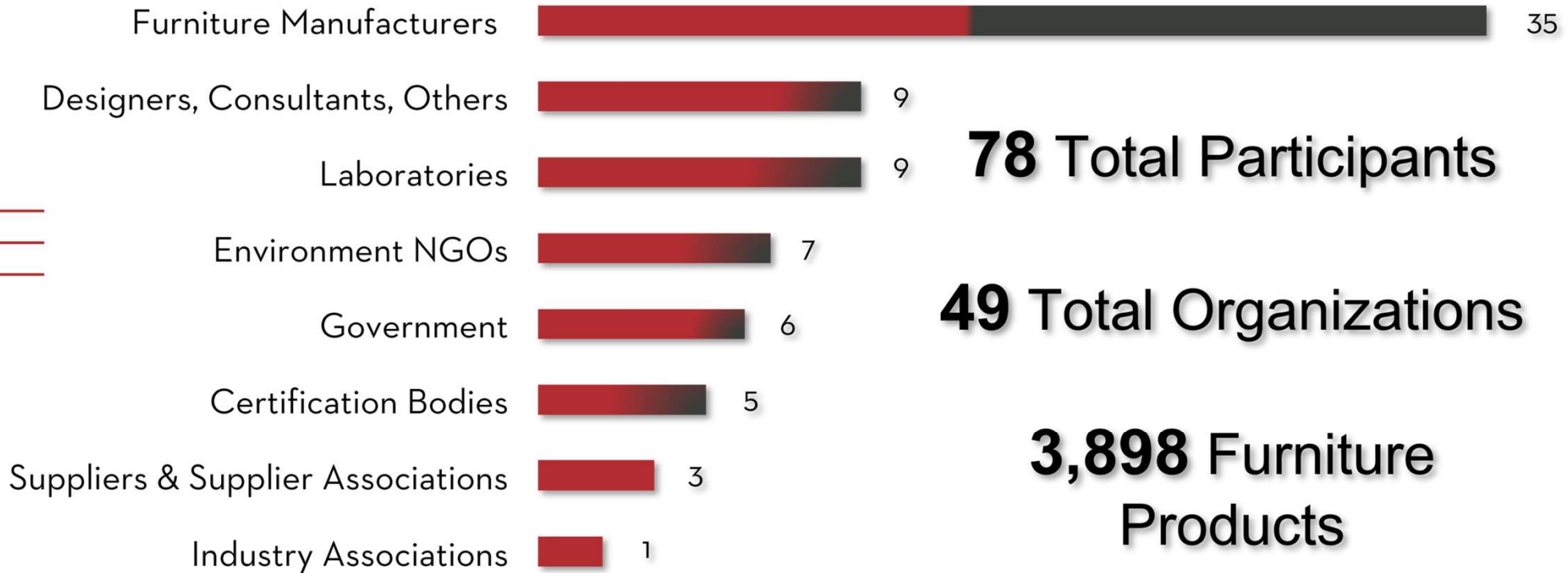
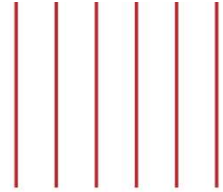


ANSI/BIFMA

e3 Furniture Sustainability Standard

- Created 2010
- Current Revision 2019
- Multi-Attribute (basis for LEVEL[®] certification)
 - Environmental, Health & Wellness, and Social Benefits

ANSI Process



02

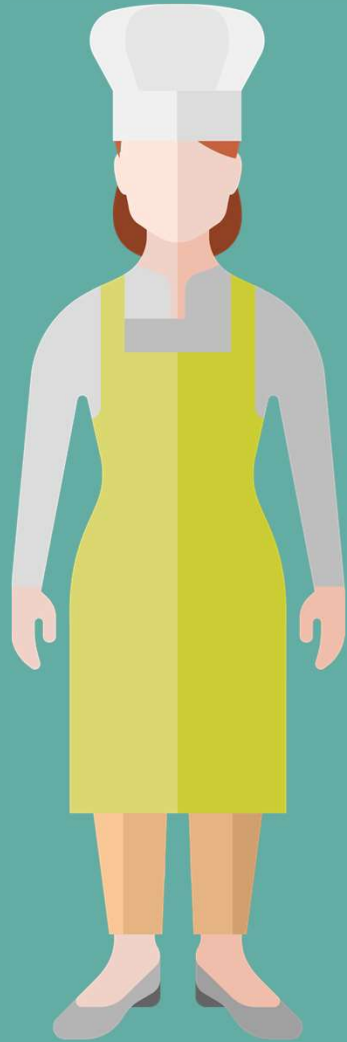
LEVEL[®] Certification

What LEVEL[®] Measures & How it's Evolved

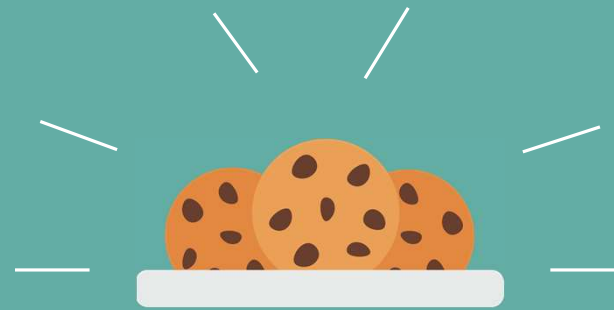


First-party Claim

Baker

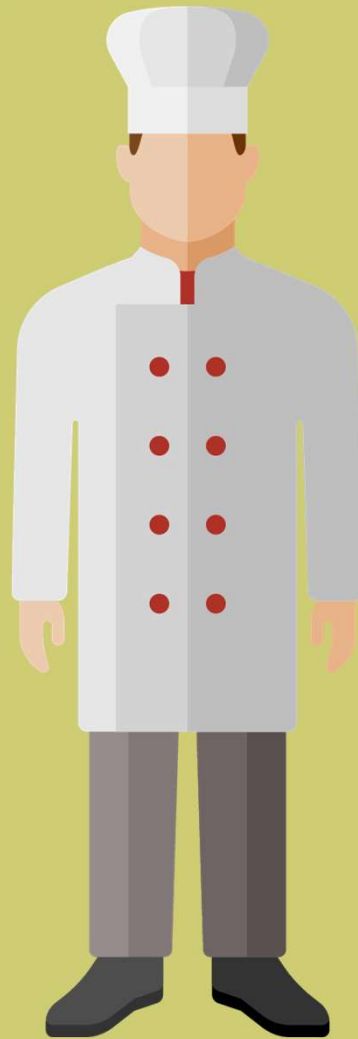


I make the best chocolate
chip cookies in the world!

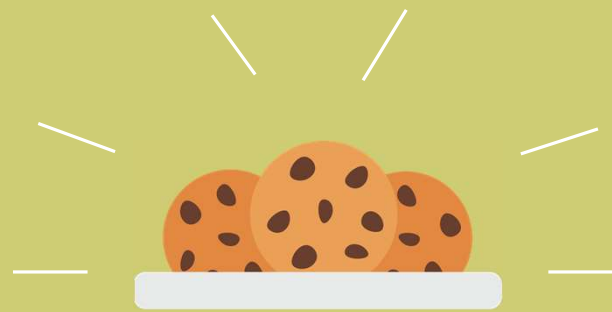


Second-party Claim

Flour vendor



She does make the
best chocolate chip
cookies in the world!



Third-party Claim

Food Network Star



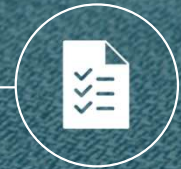
They actually are the
best chocolate chip
cookies in the world!

LEVEL vs. e3

LEVEL certifies conformance to the ANSI/BIFMA e3 Furniture Sustainability Standard

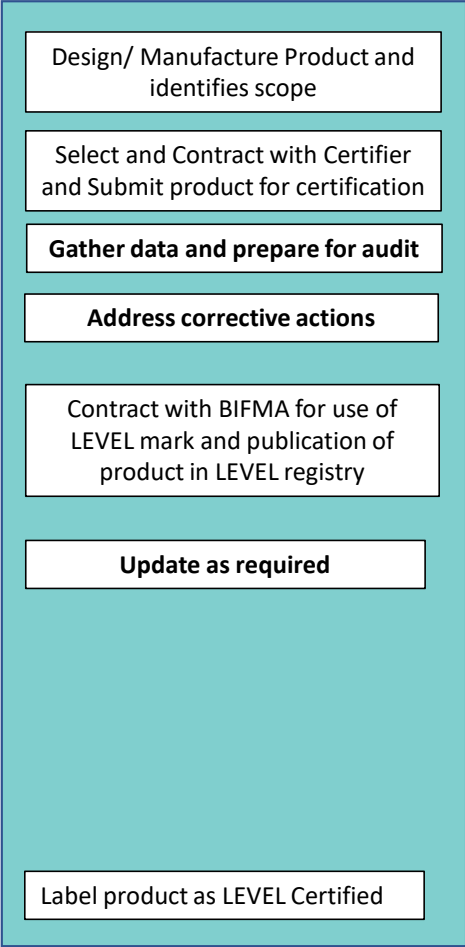


e3 is like the textbook—LEVEL is like the score of your final exam

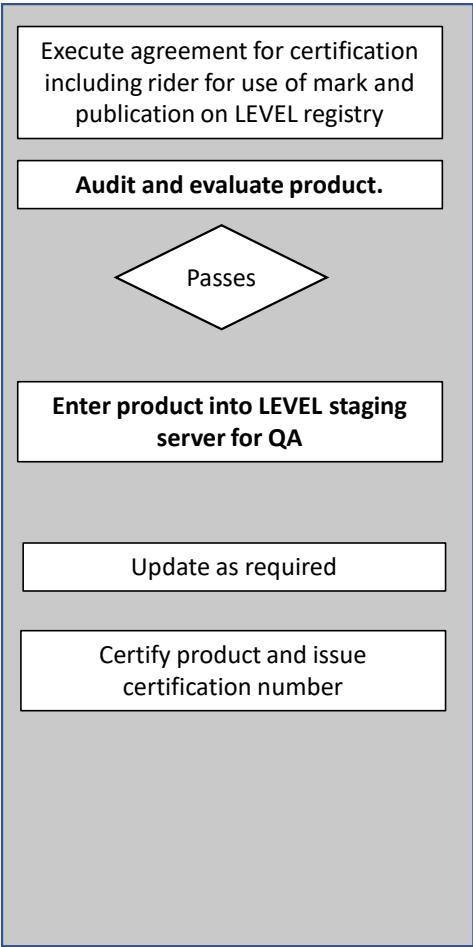


Certification Process

Manufacturer



Accredited Certifier



BIFMA



Ecomedes





3rd Party Certification

Provides

Consumer trust

Institutional Credibility

Quantifiable Impact

Eliminates

Uncertainty

Misinformation

Baseless Claims

How LEVEL[®] Works

Categories

1. Product
2. Manufacturing Facility
3. Organization

Impact Areas

1. Environmental Impact
2. Health & Wellness Impact
3. Social Impacts

LEED



WELL



Living Building
Challenge



GSA



Build for Design



EPA

The Process

1 Complete Prerequisites

2 Evaluate Credits

3 Receive Points



Complete Prerequisites

Environmental
Impact

Energy &
Environmental Policy

Design for
Environment

Health & Wellness
Impact

Key Chemical & Risk
Policies

Demonstration of
Compliance

Low Emitting
Furniture

Social
Impact

Employee Health &
Safety

Labor & Human
Rights

Community
Outreach

Environmental Impact

Climate Change

- Energy Management
- Embodied Energy
- LCA & EPD

Supply Chain

- Biobased
- Certified forests
- Recycled content

Circular Economy

- Repair/retrofit
 - Extended product responsibility
-

New! with LEVEL® 2019

Industry-wide impact baseline

Credit for EPDs*

Optimized sourcing

Responsible packaging

ISO LCA Alignment



New! with LEVEL® 2019

Low emitting - prerequisite
Targeted chemical elimination
Chemical assessments
Chemical disclosure
Ergonomic Credit
GreenScreen® Alignment
Practice Greenhealth Alignment

Health & Wellness Impact

Chemical Assessment & Transparency

- Annex B
- Greenscreen
- Health Product Declarations
- Declare

Targeted Chemical Elimination

- PVC, flame retardants, heavy metals
 - Aligned with Practice Green Health
-

Social Impact

Employee Programs

- Wellness Program
- Volunteer Program

Social & Environment Impact Assessment

Supplier Assessment

- Self-assessment tool
 - Assessing high-risk suppliers
-

New! with LEVEL® 2019

Community engagement
Wellness programs
Disaster Preparedness
Assess supplier risk
Pursuit of Benefit Corporation



Receive Points

Conformance Tiers



Total Points (min/max)

32 - 48

49 - 68

69 - 111

Product Related Points

5

16

26

LEVEL[®] Audit Cycle 3 Year





03

Market Impact

Value in the Marketplace

LEVEL® in the Marketplace



22

Guideline References, Best Practices, & Building Certifications

21

Government & International Organizations Specify Level

12

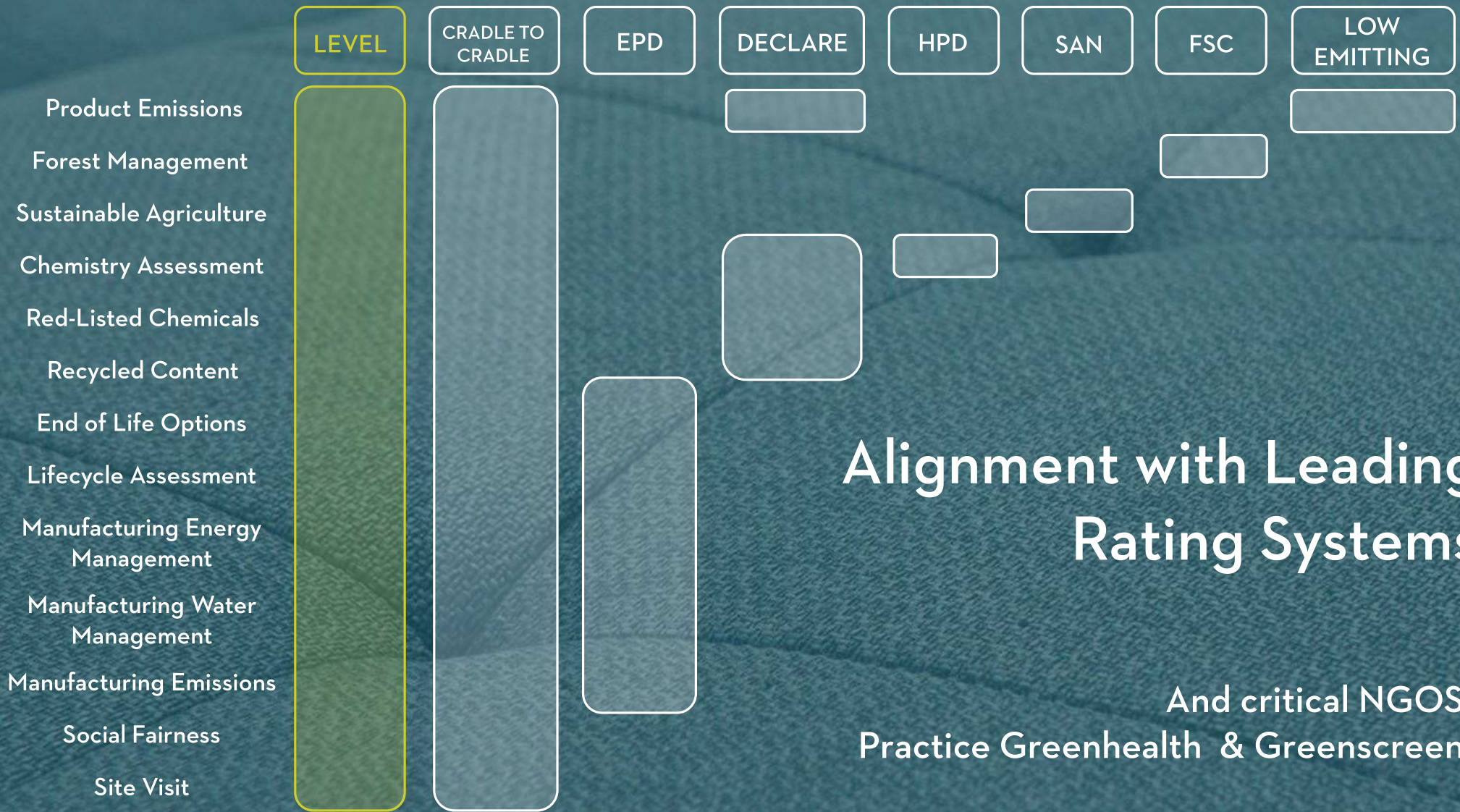
Databases/Registries

Full list of international standards & agreements available at BIFMA.org

As of July 2021

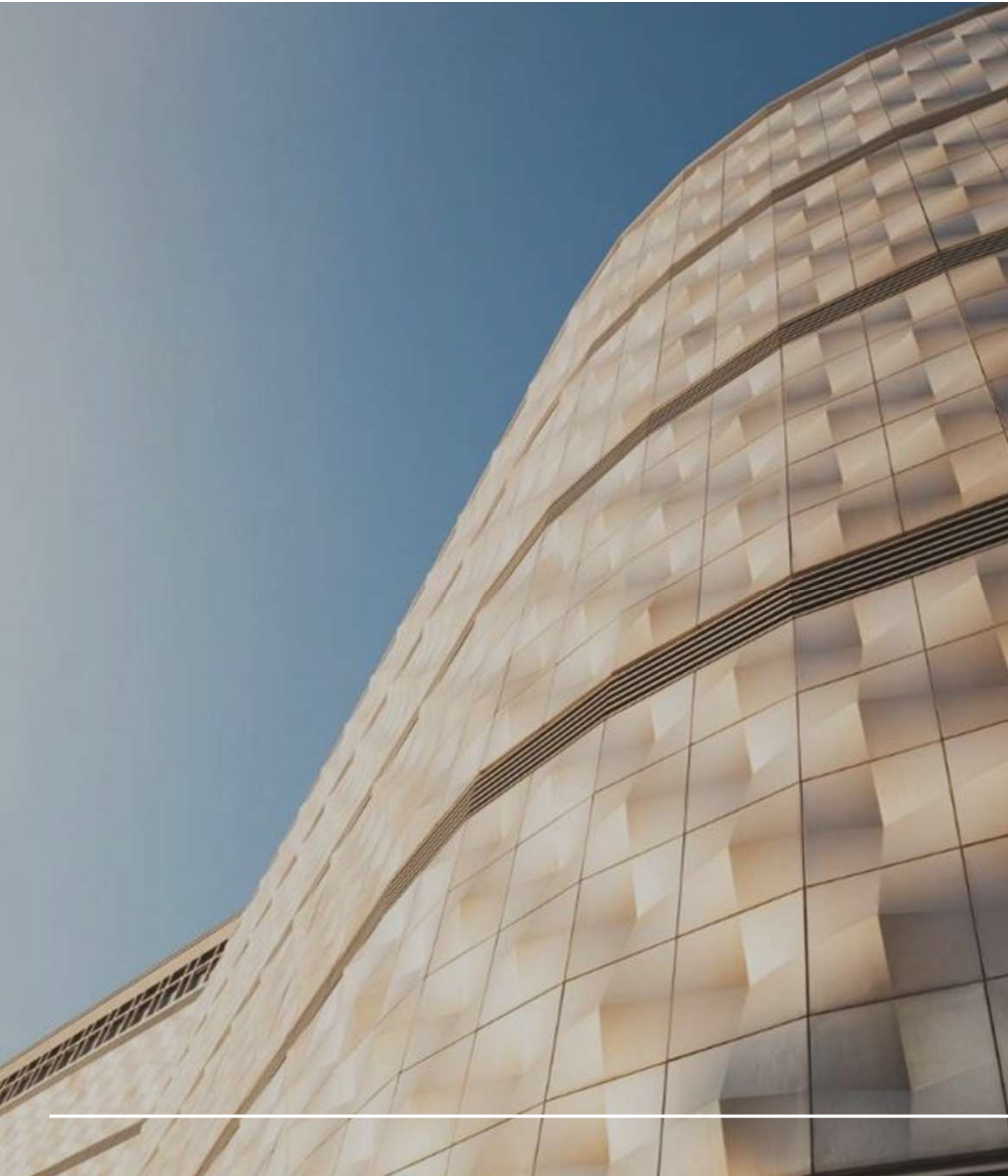
Specific Stakeholders

LEED/WELL/Living Building Challenge
US General Services Administration (GSA)
India Government Procurement
State of California Procurement
World Bank
GSA SF Tool
ASHRAE 189.1



Alignment with Leading Rating Systems

And critical NGOS
Practice Greenhealth & Greenscreen



Supported Credits

- Credit 6.2.2
 - Credit 6.2.3
 - Credit 6.3.2
 - Credit 6.3.3.1
 - Credit 6.3.3.2
 - Credit 6.3.4.1
 - Credit 6.3.4.2
 - Credit 6.6.2.2
 - Credit 6.7.3
 - Credit 6.7.4
 - Credit 6.7.5
 - Credit 7.4.2
 - Credit 7.5.1.1
 - Credit 7.5.1.2
 - Credit 7.5.1.3
 - Credit 7.5.2.2
 - Credit 7.5.2.3
 - Credit 7.5.3
 - Credit 7.6.1
 - Credit 7.6.2
 - Credit 7.6.3
-

Product Impact

2,300+
Underwent
Chemical
Assessments

3,500+
Supply Chains
Assessed
(High Risk)

3,400+
Designed for
Recycling

27
Extended Product
Responsibility
Program

1200+
Targeted
Chemical
Elimination

988
Life-Cycle
Assessment



04

LEVEL® Registry

Using LEVEL® on Your Projects

Registry Value

Free to Buyers & Public

www.levelcertified.org

Signals Quality

Through product verification

Only Comprehensive Location

For LEVEL® certified products

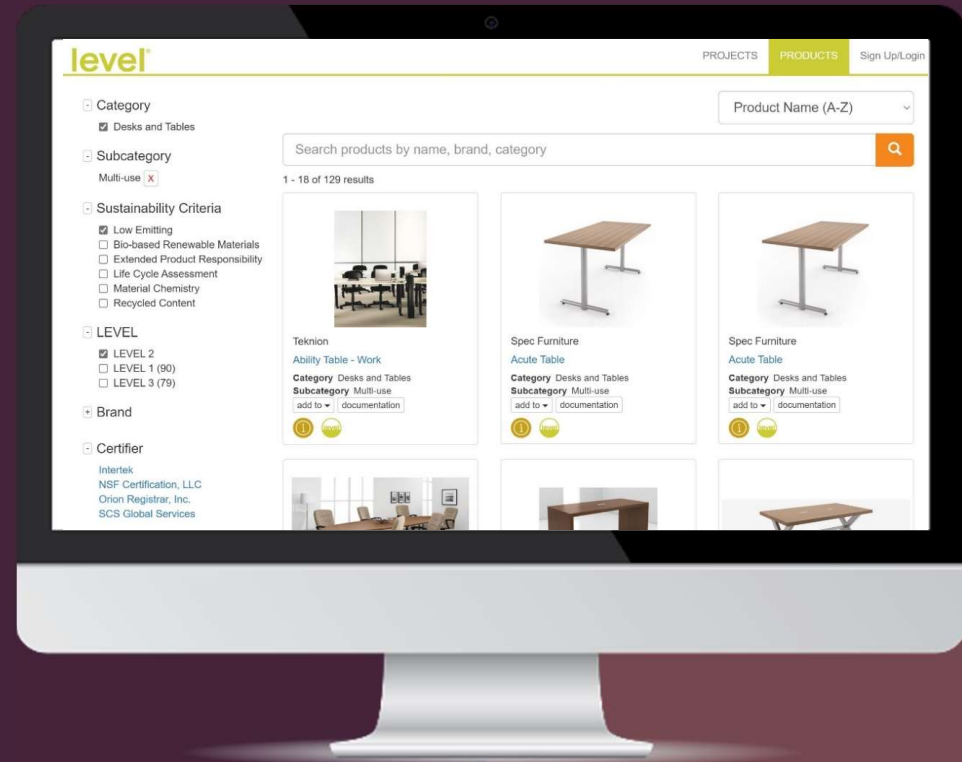


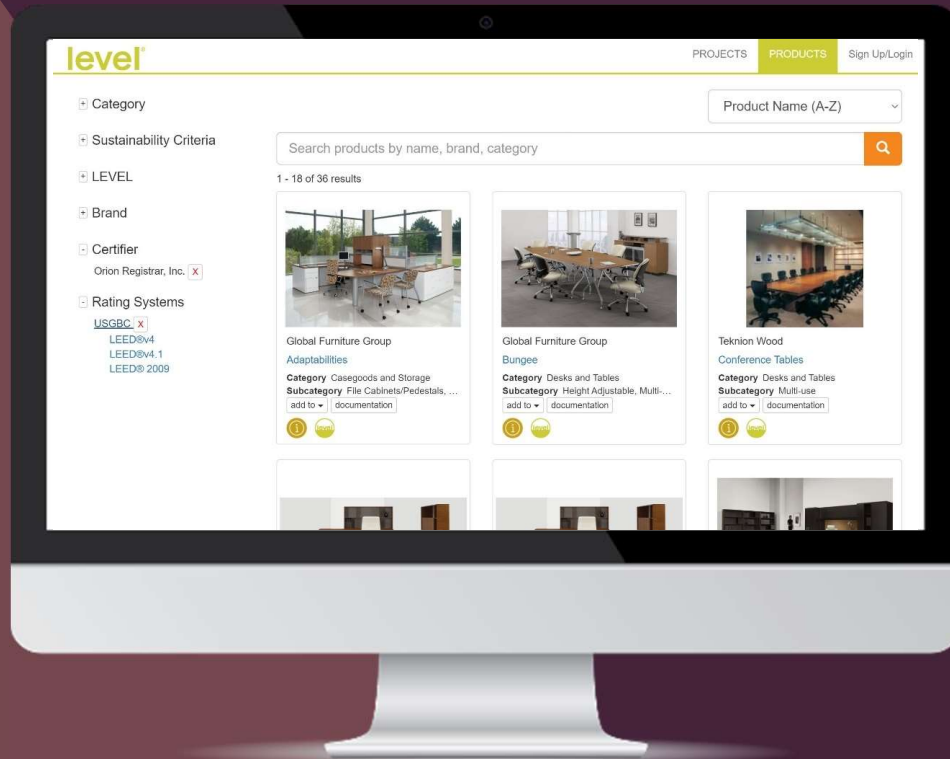
Search by:

Category & Subcategory

Sustainability Criteria

LEVEL® Conformance





... and by:

Brand



Certifier

Rating System (*including
LEED® tier*)

LEVEL® Registry Features (continued)

LEVEL Presentation Example		Get PDF
Project Zip / Postal Code 90210		
Project Overview		
Total Cost		\$500.00
Allsteel Inc. #19		\$100.00
Bernhardt Design CR.4		\$100.00
Global Furniture Group 2gether.		\$100.00
Humanscale 60		\$100.00
Steelcase Inc. Answer™ Beam		\$100.00
LEED®v4 ID+C: CI		
Materials and Resources: Building product disclosure and optimization - environmental product declarations (MR c3)	0.25 products contribute	
Materials and Resources: Building product disclosure and optimization - sourcing of raw materials (MR c4)		\$208.00
Materials and Resources: Building product disclosure and optimization - material ingredients Opt-1 (MR c5 Option 1)	2 products contribute	
Materials and Resources: Construction and demolition waste management (MR c5)	Some products contribute	
Indoor Environmental Quality: Low emitting materials (EQ c2)		\$300.00

Project Planning Tool

		Allsteel Inc. #19 Category Seating Subcategory Conference/Executive
<p>The #19 work chair is the sum expression of 18 integral parts – each one custom designed – plus one equally integral human being. It began with you: how you sit, move, work, adjust, and recline. So it moves naturally with you, keeps you supported in every position, and makes you comfortable throughout the day, which means you can stay focused on ideas and concentrate on work. #19 is made from 100% recycled aluminum, 88% of the materials used in its manufacture are recyclable, and Allsteel will voluntarily reclaim any #19 chair that's no longer useful.</p> <p>hide details</p>		
General Information		
Contact Email	MolineC@hnicorp.com	
Contact Name	Courtney Moline	
Contact Phone	563-299-6804	
Contact Title	Customer Support	
GSA Contact Email	CUSTOMERSUPPORT@ALLSTEELOFFICE.COM	
GSA Contact Name	Allsteel Customer Support	
GSA Contact Phone	888-255-7833	
GSA Contact Title	Customer Support	
Product Page	External Link 	
LEVEL Certification		
BIFMA LEVEL® Certificate Number and Link to Document	LEVEL 2 (SCS-SCF-02310) Certified by SCS Global Services valid 2020-02-16 to 2023-02-15	
Quantity (EA)	1	
Unit Price (\$)	\$100.00	
Extended Price	\$100.00	
LEED®v4 ID+C: CI		
Materials and Resources: Building product disclosure and optimization - environmental product declarations (MR c3)	Contributes as 0.25 products	

Product Page

LEVEL[®] Takeaways

- 3rd Party Certified Multi-Attribute Standard
- Aligned with Major Sustainability Rating Programs
- LEVEL[®] Registry Provides Project Tools & Resources
- Visit www.levelcertified.org





Questions?