



# Indigenous Service Canada's Geospatial Infrastructure

GIS Day - November 13, 2019



Indigenous Services  
Canada

Services aux  
Autochtones Canada

Canada

# ISC Geomatics Services

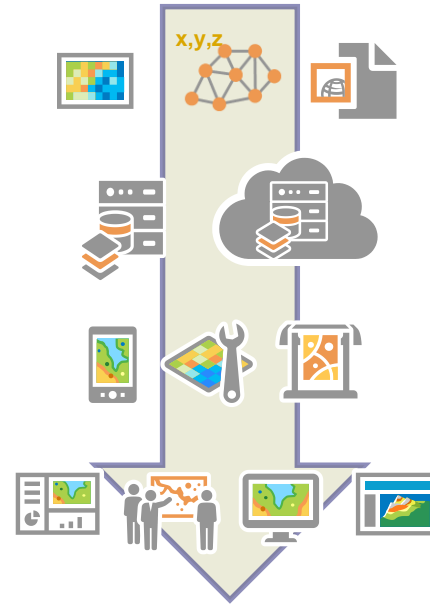
## Vision

- Serve as the **Geospatial Infrastructure** for ISC/CIRNAC
- Promote the use of geography to enhance service delivery and decision making – **Geo-enabling program information**
- Facilitate and coordinate information management and geospatial technology initiatives - **Store once, use many times by all**

# Departmental Geospatial Infrastructure

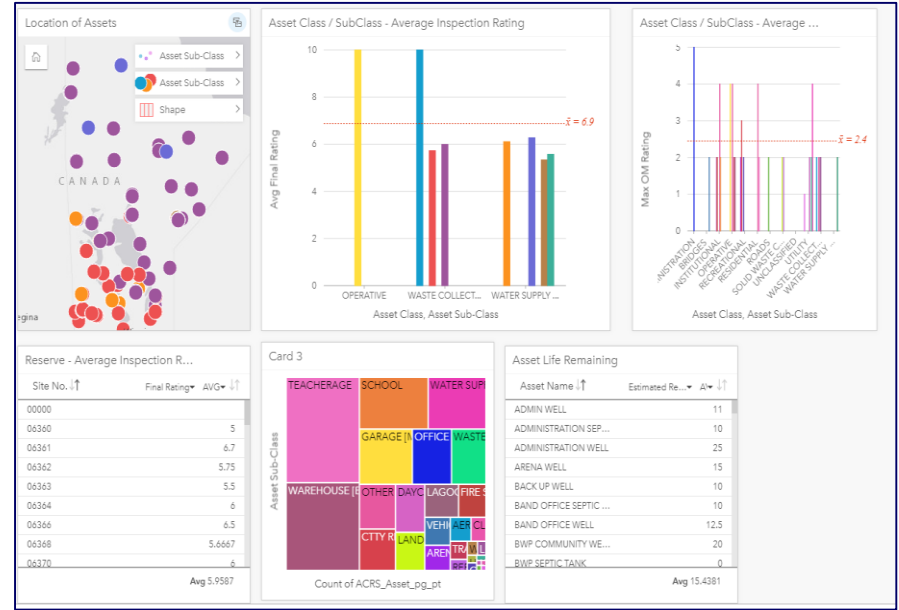
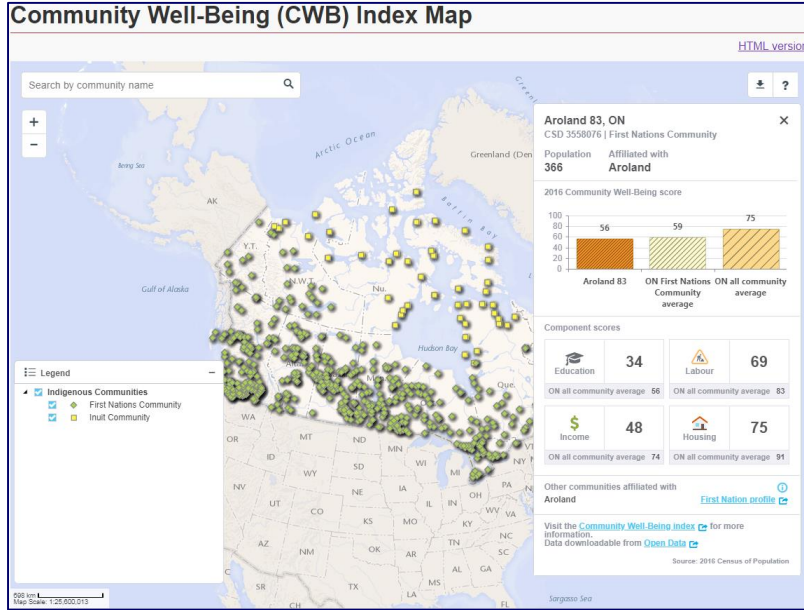
Comprises all of the components that enable and enhance decision making through the discovery, access, visualization and analysis of geospatial data.

- ▶ Data and data governance
- ▶ Service oriented architecture
- ▶ Applications, tools, interactive web maps.
- ▶ Spatial analysis, visualization and cartography





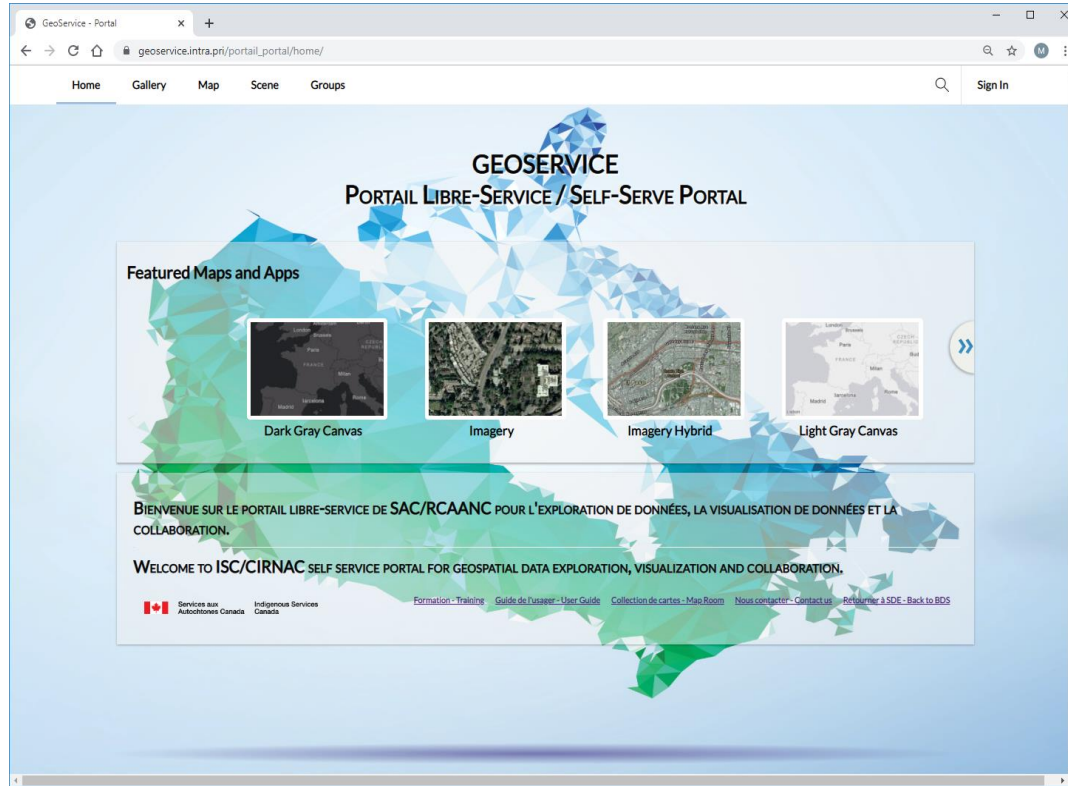
# Spatial Analysis and Statistics



# Published to FGP /Open Data

<u>FGP Name</u>	<u>Nom PGF</u>	<u>Publication</u>
<b>First Nations Location</b>	<b>Localisation des Premières Nations</b>	9-Dec-15
<b>Tribal Councils Location</b>	<b>Localisation des conseils tribaux</b>	24-Dec-15
<b>Inuit Communities Location</b>	<b>Localisation des collectivités inuites</b>	12-Jan-16
<b>Inuit Regions (Inuit Nunangat)</b>	<b>Régions inutes (Inuit Nunangat)</b>	3-May-17
Oil and Gas Rights	Droits pétroliers et gaziers	21-Jan-16
Mineral Tenure in Nunavut - Mining Claims	Tenure minière au Nunavut - Claims miniers	31-Mar-16
Mineral Tenure in Nunavut - Mining Leases	Tenure minière au Nunavut - Baux miniers	31-Mar-16
Mineral Tenure in Nunavut - Prospecting Permits	Tenure minière au Nunavut - Permis de prospection	31-Mar-16
Mineral Tenure in Nunavut - Coal Exploration Licences	Tenure minière au Nunavut - Licences d'exploration relatifs à la houille	31-Mar-16
Community Well-Being Index	Indice du bien-être des collectivités	30-Mar-16
<b>Pre-1975 Treaties (Historic Treaties)</b>	<b>Traités pré-1975 (traités historiques)</b>	14-Jun-16
<b>Post-1975 Treaties (Modern Treaties)</b>	<b>Traités post-1975 (traités modernes)</b>	14-Jun-16
<b>Aboriginal Agreements</b>	<b>Ententes autochtones</b>	14-Jun-16
First Nation Community Infrastructure Investments	Investissements dans l'infrastructure des collectivités des Premières Nations	3-Apr-17
PEMT - Beaufort Sea and Mackenzie Delta	OGERP - Mer de Beaufort et delta du Mackenzie	27-Mar-19
PEMT - Eastern Arctic	OGERP - Arctique de l'Est	27-Mar-19
PEMT - Hight Arctic	OGERP - Extrême Arctique	27-Mar-19

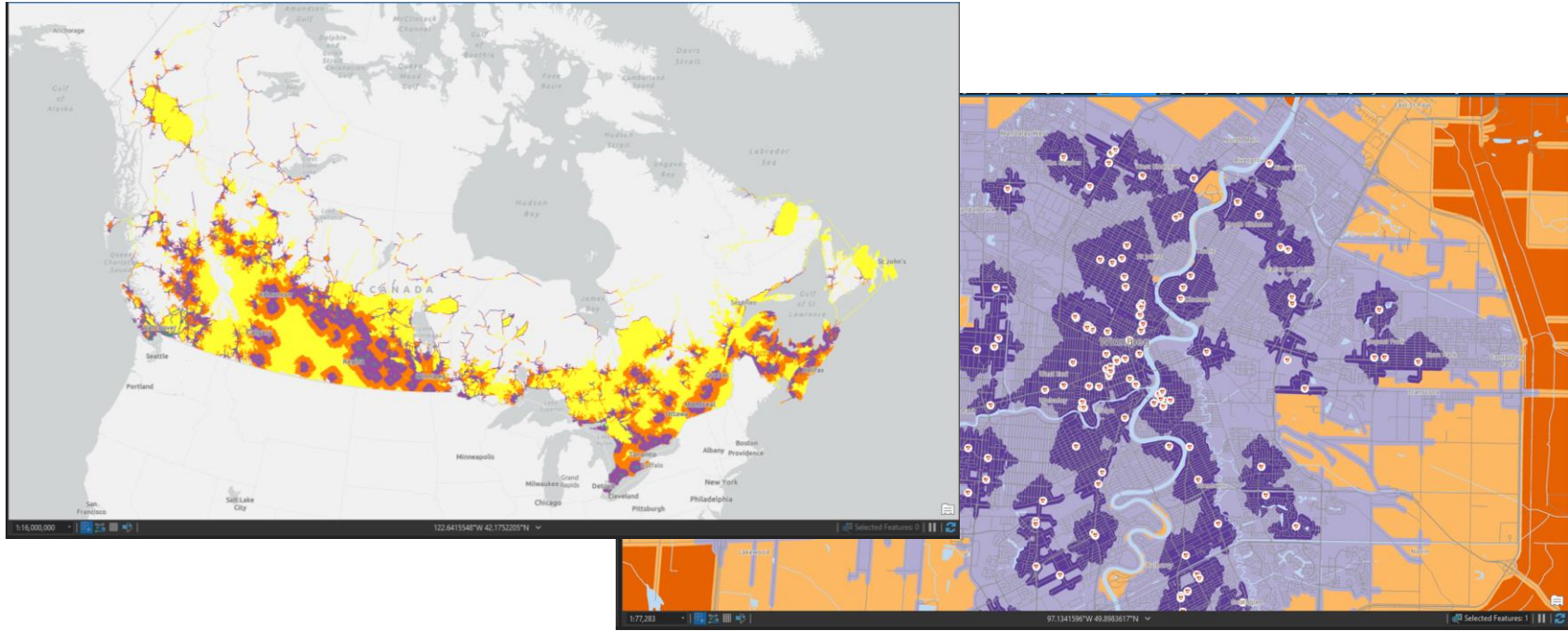
# Geospatial Self Service Analytics



- ESRI Portal Web based GIS
- Access to enterprise data repository
- Collaborative environment maps, apps, workflows
- Training Videos
- Community of Practice

# Access to Service Metrics

Network analysis to determine drive time distance to Health, Education and Justice services.

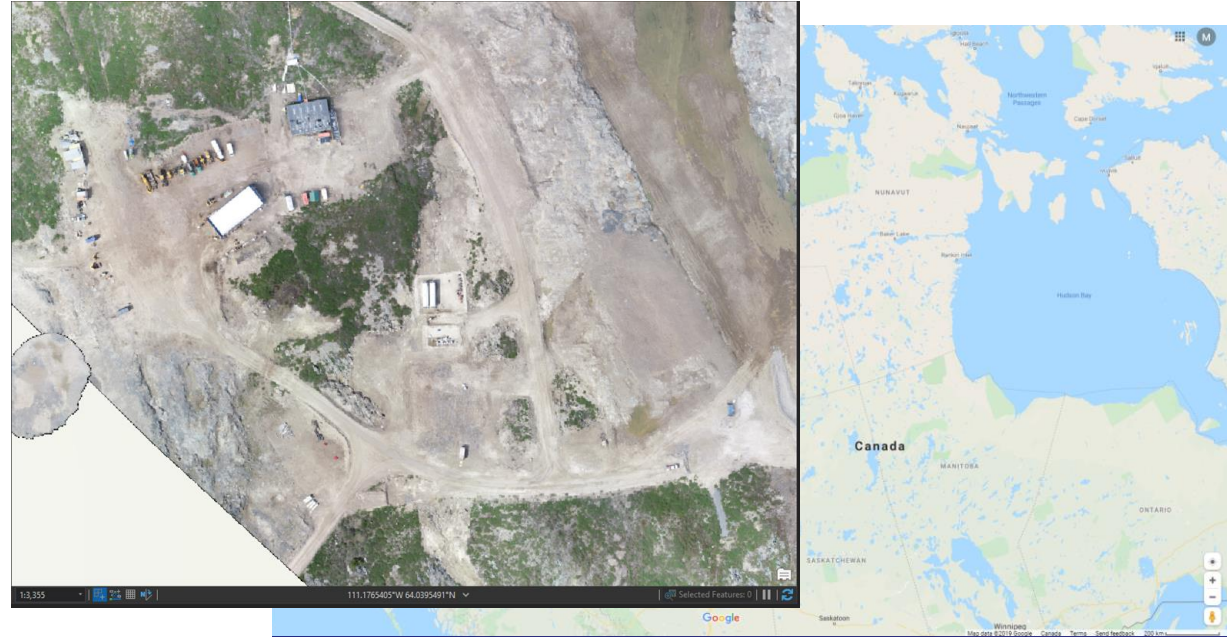




# UAV and High-Resolution Imagery Services

## NWT Mine Remediation:

- Mines: Bullmoose, CanolTrail, Colomac, Discovery, Giants, Gordon, Indore Hottah, Pinpoint, Tundra, Starklake, Rayrock
- Sufficient detail to determine state extraction and processing facilities and tailings
- Orthomosaics and DEM Published as WMTS
- Accessible to wide range of stakeholders



# Geo-Literacy

- Many services that the departments deliver involve geospatial data. It is imperative that those involved have sufficient geomatics literacy to understand the data, tools and technologies.
- Commissioned a Strategic Training Plan to ensure that geomatics training delivered as capacity development initiatives will be accessible and of sustainable use to a wide range of First Nation audiences.

# ISC Geomatics Services

Contact

[Matthew.Maloley@Canada.ca](mailto:Matthew.Maloley@Canada.ca)

ISC/CIRNAC Map Room

<https://www.aadnc-aandc.gc.ca/eng/1290453474688/>