

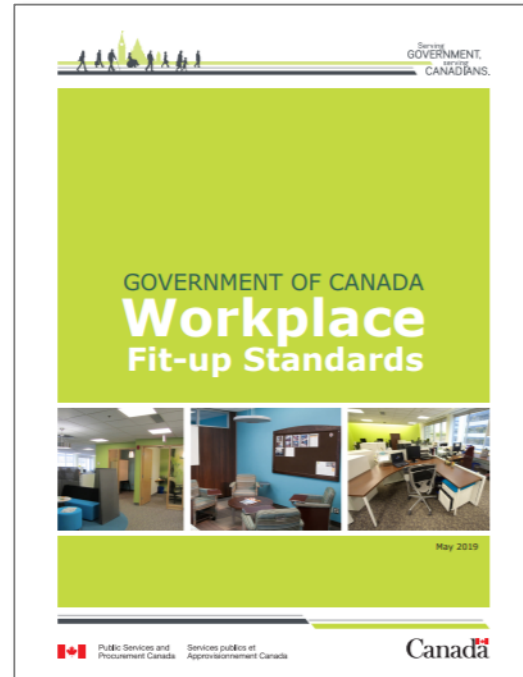
# FEDERAL WORKPLACE MODERNIZATION

Flexibility in Design & Utilization

March 2023

# Gov. of Canada - General Purpose Office Space

GCworkplace was first developed back in 2017 and after a few successful pilot projects it officially became the design standard for General Purpose Office Space in April 2019.



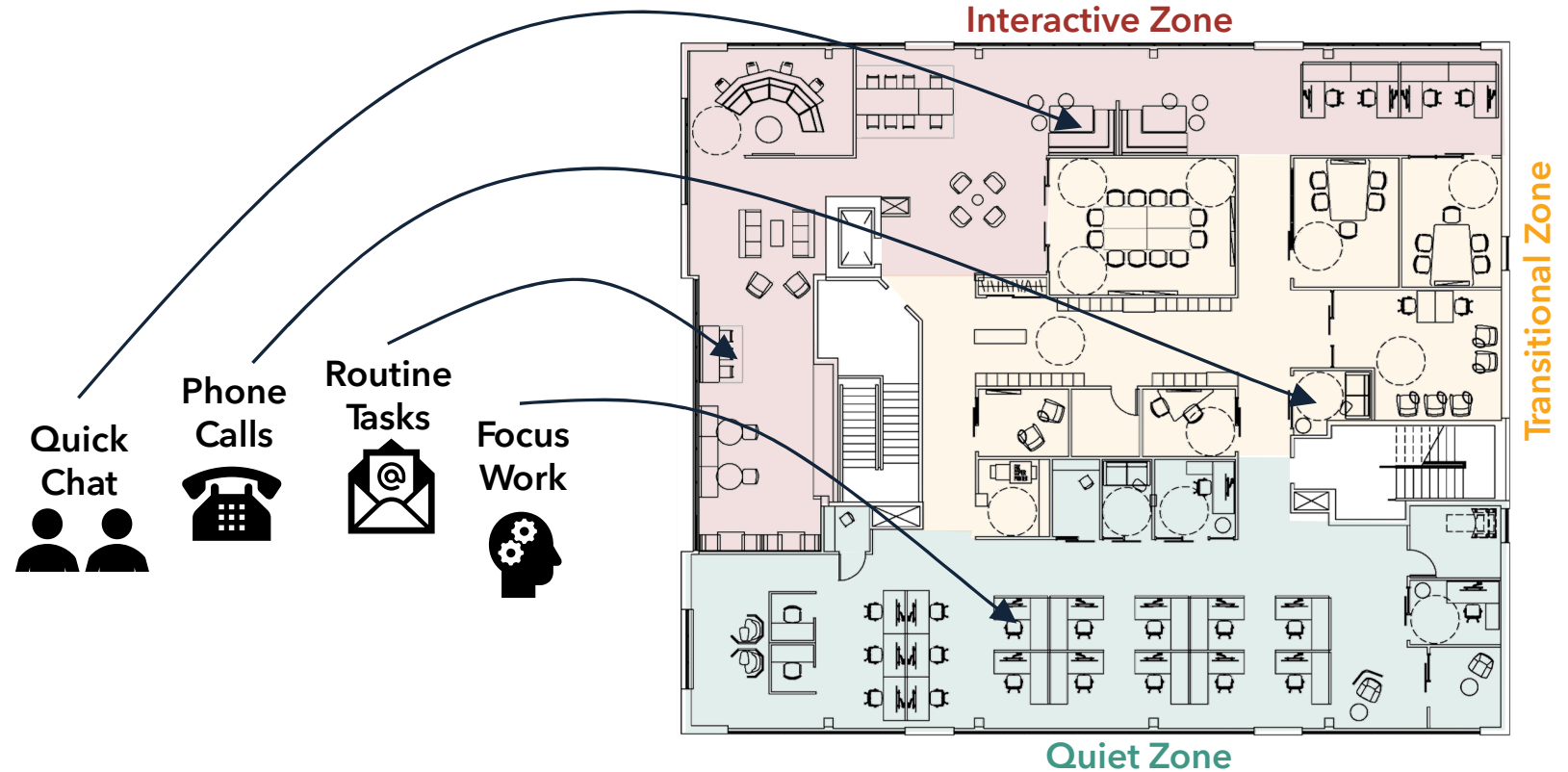
# GCworkplace & Activity Based Working

GCworkplace is specifically designed to enable *Activity-Based Working*, which recognizes that with mobile technology, “work” isn’t somewhere you go, but rather something you do!



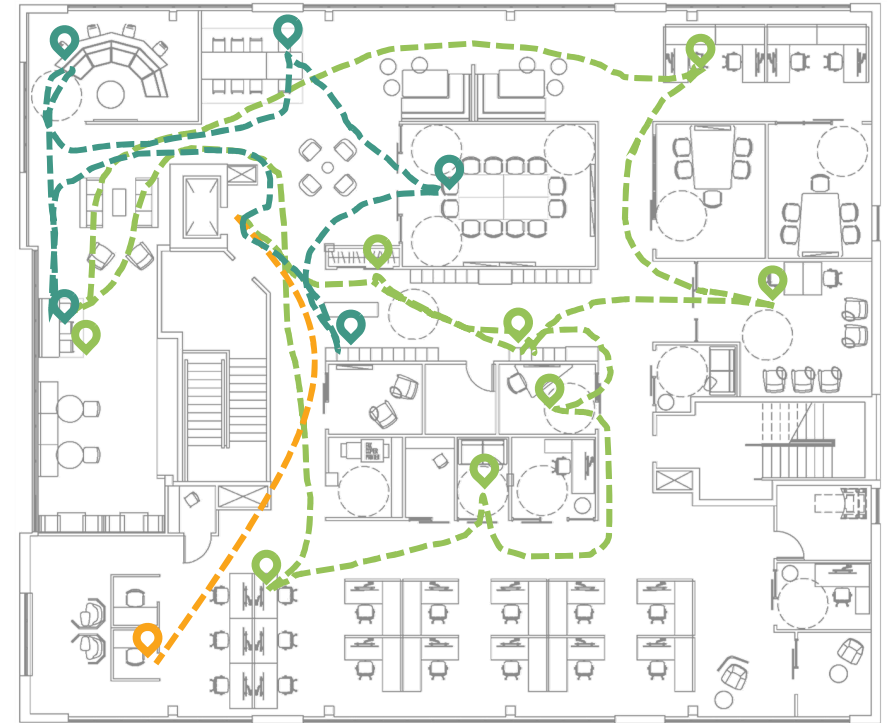
# Traditional 1:1 Workstations vs GCworkplace

With a wide variety of workpoints found in three distinct acoustical zones, employees can untether from one specific spot and gain the freedom to access an entire ecosystem of work settings.



# GCworkplace is Inclusive

A shared, activity-based workplace is an inclusive workplace where everyone, regardless of job title, is empowered to self-select the work settings that best suit their various activities, needs and personal preferences throughout the day, on any day.



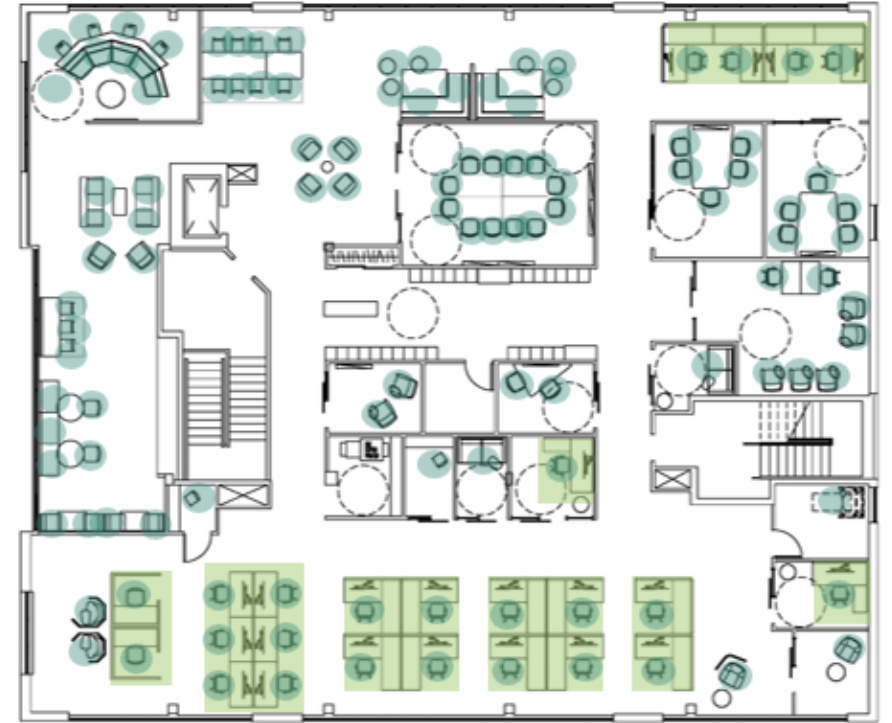
► [more info on GCworkplace & Inclusivity](#)



# Shift in Mindset from “Me Space” to “We Space”

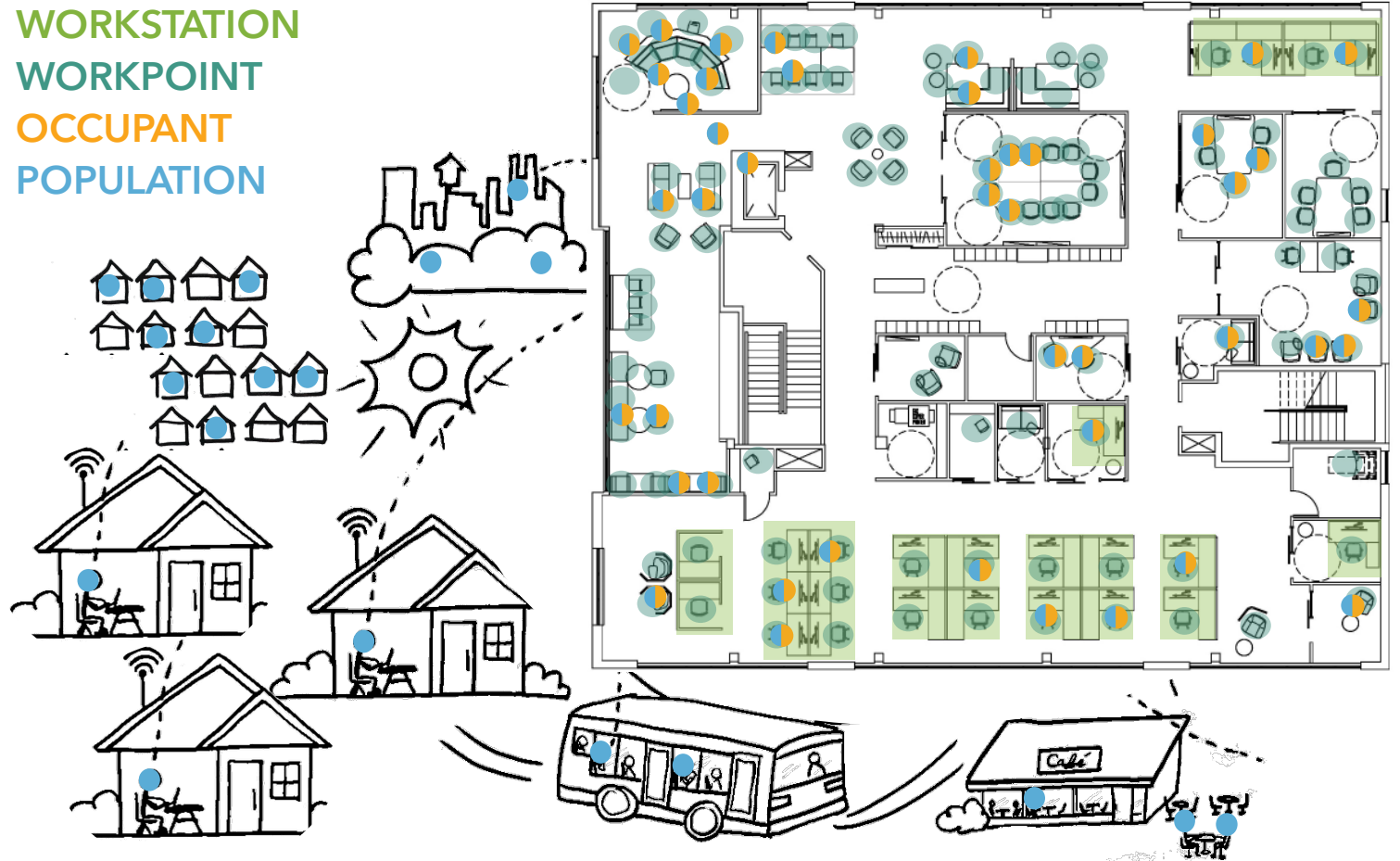
With an equal access, unassigned use of space, as well as a ‘one-workpoint-at-a-time’ etiquette, GCworkplace provides an almost 2:1 ratio of total workpoints (from all categories) to target onsite occupancy; meaning there will always be ample variety of available workpoints to be used throughout the day.

## WORKSTATION WORKPOINT



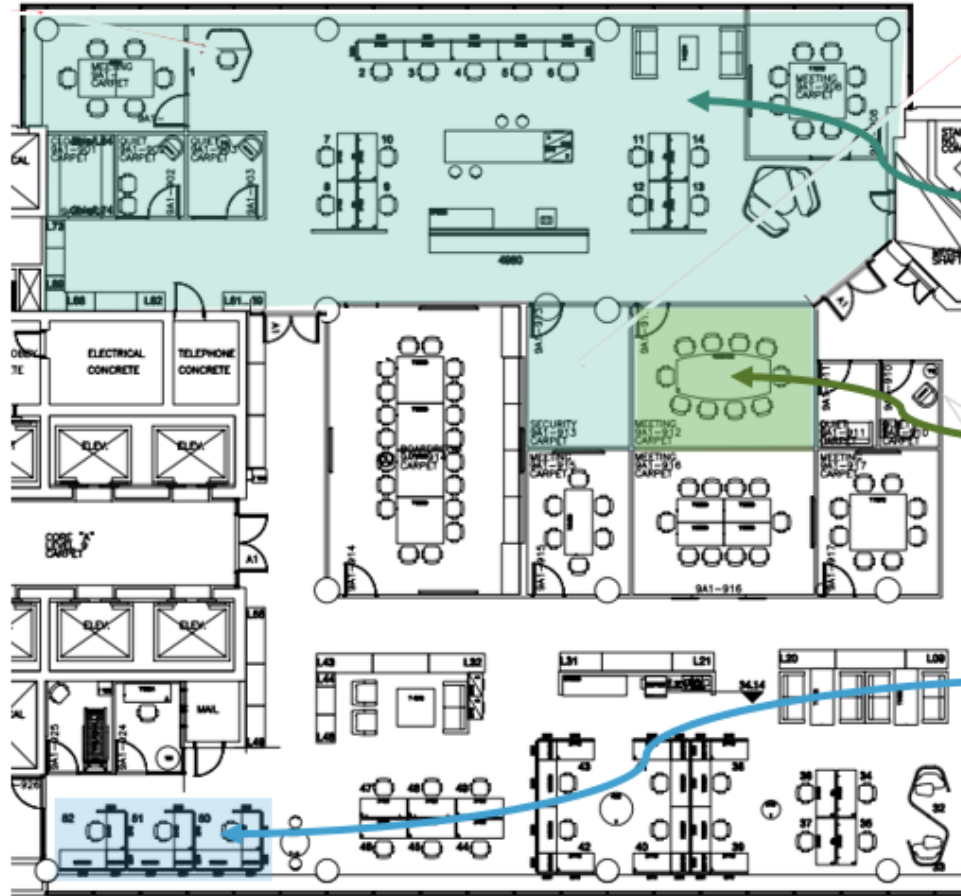
# GCworkplace for Hybrid Working

With Hybrid Working now being the norm, a GCworkplace can accommodate a larger population than it's onsite target occupancy, knowing that on any given day, a percentage of employees are working remotely.



# GCworkplace and Security Requirements

GCworkplace is designed to enable all work activities normally done in the workplace, including those that have specific security and privacy requirements, as well as any specialized equipment or function.



Secure Suite

Limited Access

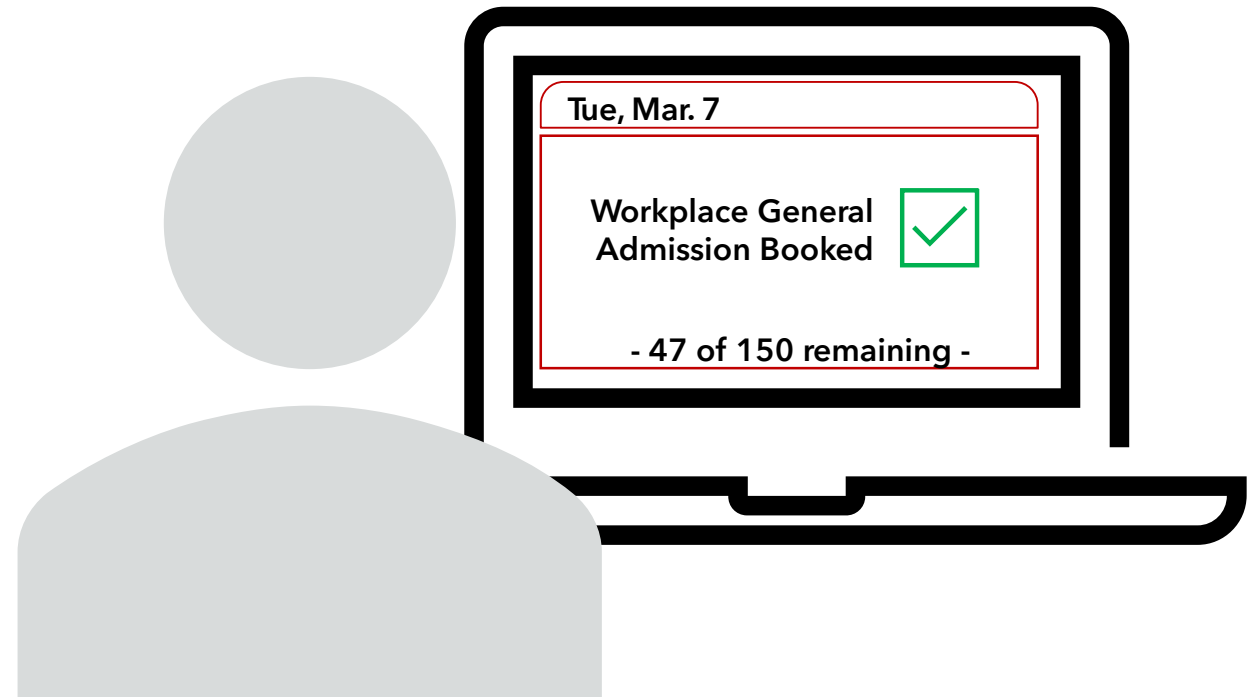
Specific Function





# Managing Occupancy & the Employee Experience

Aside from meeting rooms, a “general admission” booking prior to using the workplace will ensure occupancy levels are managed while allowing occupants to freely use the entire workplace based on their own individual needs and preferences. Requiring employees to book specific workpoints ahead of time goes against the flexible intended use of GCworkplace.



▶ [more info on space booking strategies](#)



# Q & A

Strategic Workplace Advisory Group (SWAG)

Accommodation Management & Workplace Solutions  
Public Services and Procurement Canada

