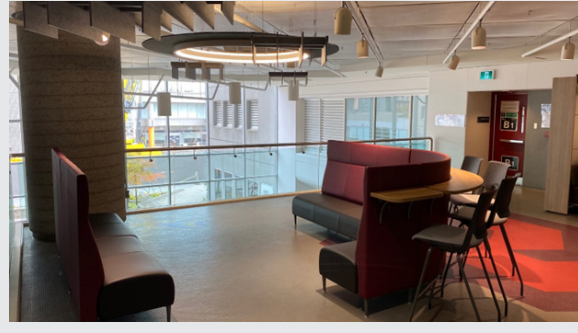
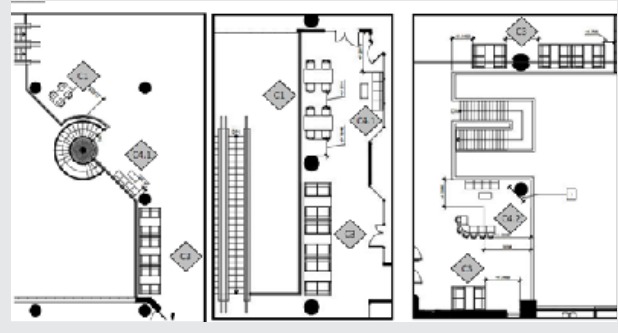
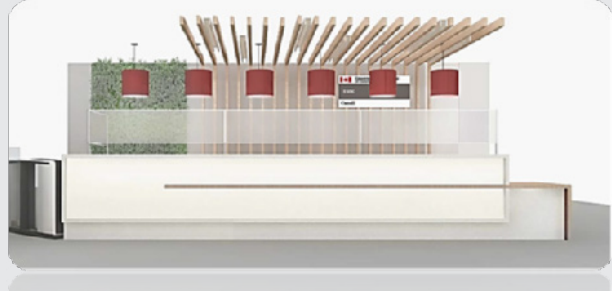
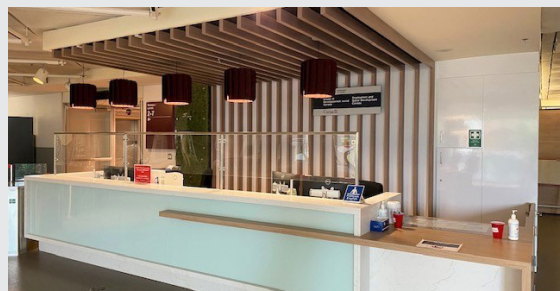


PROJECT LOCATION : Place du Portage in Gatineau, QC  
 DEPARTMENT : Employment and Social Development Canada (ESDC)  
 STRATEGIC ADVISOR: Brigitte St Amour [brigitte.stamour@hrsdc-rhdcc.gc.ca](mailto:brigitte.stamour@hrsdc-rhdcc.gc.ca)  
 PROJECT MANAGER : Karine Lessard ([karine.lessard@hrsdc-rhdcc.gc.ca](mailto:karine.lessard@hrsdc-rhdcc.gc.ca))

At Place du Portage, some lobby spaces were modernized, a component of the ESDC Workplace initiative. Because the lobby spaces do not belong to ESDC, approval was required from Public Services and Procurement Canada (PSPC) to complete the project. The main goals of this project were to create a more welcoming environment by modernizing the reception area and addressing the lack of collaborative/meeting spaces.



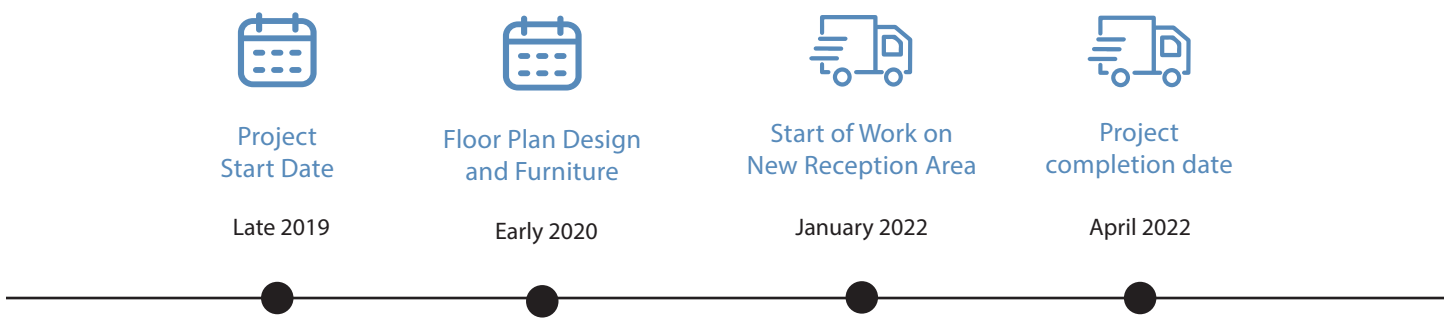
Design for the New Reception Area:



The design team conceptualized a modern design that was in-line with the existing colour palette of Place du Portage. The design included new light fixtures and technology as well as live walls that mirrored the current vegetation in the main entrance's atrium.

PROJECT SCOPE

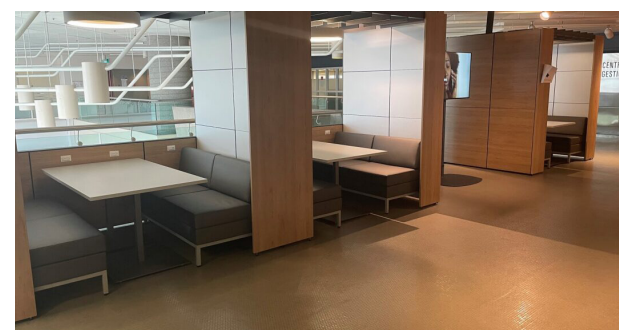
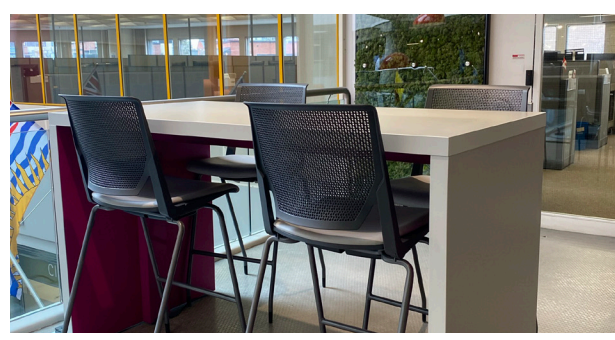
Concept Consultants  
Hay Design



COLLABORATIVE SPACES

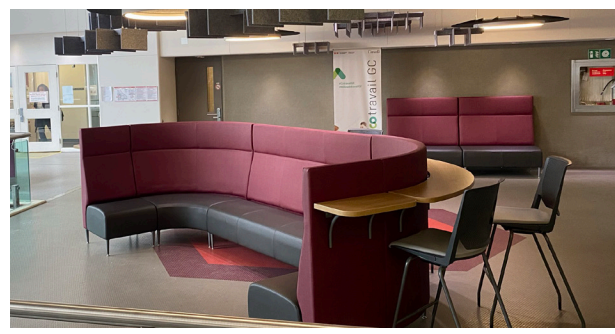
Collaborative areas are based on the concept of Activity Based Working and allow employees to work and connect with one another. The variety of spaces, including chat points, huddles, and team collaborative spaces, empowers employees to choose a setting best suited to their work activities.

**Chat Point:** Located on the first floor of the building, Chat Points are areas designed for brief, impromptu conversations.



**Huddle:** Huddles are informal open or semi-enclosed areas for short-to mid-term meetings.

**Teaming Area:** The Teaming Area is a space designed to accommodate group work and idea generation. This space is made to accommodate bigger groups and larger open meeting areas.



MAJOR TURNING POINT OF THE PROJECT

Considering much of the design phase was done during the pandemic, on-site access was restricted resulting in issues that needed to be contended with, such as measurements of spaces and the condition of some ceilings. Given the limitations, the overall project was a success.

A UNIQUE ASPECT ABOUT THE PROJECT

Lobbies are not a part of ESDC's space allocation. The redesign of the Place du Portage reception area was a first foray into modernizing a non-ESDC space.

PHOTOS OF PLACE DU PORTAGE PHASE IV

